

This cover section is produced by the AIA Archives to show information from the online submission form. It is not part of the pdf submission upload.

2025 AIA Fellowship

Candidate Elizabeth M. Hallas
Organization Anderson Hallas Architects, PC
Location Golden, Colorado
Chapter AIA Colorado; AIA Denver

Category of Nomination

Object 1 (Design, Urban Design, Preservation) > Preservation

Summary Statement

Liz Hallas leverages her community based sustainable preservation design expertise to lead the most challenging national historic landmark rehabilitations across the West. Concurrently, she expands the national preservation conversation through advocacy and knowledge sharing.

Education

University of Colorado Denver, 1996-1998, Master of Architecture
University of Colorado Boulder, 1990-1994, Bachelor of Environmental Design

Licensed in:

Arizona, Arkansas, Colorado, Iowa, Idaho, Indiana, Kansas, Michigan, Minnesota, Missouri, Montana, New Mexico, Ohio, Oklahoma, Oregon, South Dakota, Washington

Employment

Anderson Hallas Architects, PC 2011 - Present
Andrews & Anderson Architects, PC 1998-2011
Coburn Development, 1993-1998



5 October 2024

Carl D'Silva, FAIA, Jury Chair
2025 Jury of Fellows Committee
American Institute of Architects
1735 New York Avenue, NW
Washington, DC 20006

**RE: Nomination of Elizabeth (Liz) Hallas, AIA, to the College of Fellows, Object 1:
Design - Preservation**

Dear Mr. D'Silva and Members of the Jury:

It is with great pleasure and enthusiasm that I write to sponsor Elizabeth (Liz) Hallas, AIA, for nomination into the AIA College of Fellows.

I first met Liz through her work and leadership on the AIA Historic Resources Committee Advisory Committee. Liz's passion for the intersection of sustainability and historic preservation is evident in the design excellence she brings to her public-sector projects and in her deep commitment to preservation advocacy and knowledge-sharing locally and nationally. Liz's preservation projects are models for the profession and demonstrate how building reuse is climate action. Her strong stewardship ethos has benefited the many communities in which she has worked.

As a preservation architect who has worked on landmark projects for the National Park Service (NPS) for nearly twenty years, I can say with authority how impactful Liz's design work has been on NPS projects across the west. Her beautifully and thoughtfully executed designs for the preservation and rehabilitation of landmarks in our national parks seamlessly blend the "art and science" of sensitively integrating systems, program, and technology into historic buildings so they continue to work for today's needs. Liz's remarkable portfolio includes over 100 projects in 47 national parks across 21 states. Through this work, she has also become a national expert on "high-altitude" preservation. All of her projects have made significant contributions to the NPS's mission to protect the natural environment and preserve our architectural heritage for the enjoyment of the public and future generations.

Beyond her exemplary design for her preservation projects, Liz has been a strong and consistent leader and advocate in Colorado and nationally for preservation issues ranging from sustainability and adaptive reuse to preservation standards. Liz is a natural and skilled convener who brings people and organizations together to advance our profession. She has been deeply involved in Colorado's preservation community through years of service to Colorado Preservation, Inc. and the History Colorado State Historical Fund, and she was a co-founder of the Rocky Mountain Chapter of the Association for Preservation Technology. Her exemplary work and impactful leadership on the AIA Historic Resources Committee, including the development of the highly successful Taliesin Colloquium in 2024, has elevated and advanced the ability of practitioners to address key AIA building reuse priorities and challenges related to climate, equity, and resilience.

Liz is a design leader in sustainable preservation, a mentor for the next generation of preservation architects, and a thought leader in the preservation community. Her work has clearly advanced the field of historic preservation nationally, and she is most deserving of elevation to Fellowship in the AIA.

Sincerely,

A handwritten signature in blue ink, appearing to read "T. Jester".

Thomas C. Jester, FAIA, FAPT, LEED AP
Principal, Chief Operating Officer



1 | SUMMARY OF ACHIEVEMENTS

Liz Hallas leverages her community based sustainable preservation design expertise to lead the most challenging national historic landmark rehabilitations across the West. Concurrently, she expands the national preservation conversation through advocacy and knowledge sharing.

SUSTAINABLE PRESERVATION DESIGN EXPERTISE

Liz develops design solutions for her clients to best serve buildings of yesterday, to meet the needs of tomorrow. Witness to the deterioration common with centuries old buildings, Liz intimately understands the criticality of resilient design solutions. **She passionately believes building reuse is the fundamental building block of tackling climate change.** With a keen eye for assessing existing conditions, strong critical analysis skills, and a holistic, integrated design approach, Liz enjoys the puzzle of working with the constraints of existing buildings to fuel her creativity.

Liz's expertise straddles both sustainability and preservation as a LEED AP BD+C for nearly two decades, and as an architect who vastly surpasses the qualifications for Historic Architecture as established by the US Secretary of the Interior. Having successfully guided numerous projects through these often-competing goals, Liz is a recognized thought leader known for sharing tangible design expertise of the careful balance of sustainable preservation. **Liz's experience has allowed her to mentor the next generation of sustainable preservation architects.**

REHABILITATION DESIGN FOR NATIONALLY SIGNIFICANT LANDMARKS

Having effectively led local, impactful community revitalization projects balancing both preservation and sustainability, Liz found opportunities to **expand her architectural reach to the national level** with the like-minded client of the National Park Service (NPS). Shared values include a stewardship ethos for the public's benefit, along with the need to respect cultural resources while conserving natural resources.

Over the past two decades, Liz's portfolio of nationally significant historic projects has grown to **include 100+ projects, in over 47 park units, throughout 21 states across the country.** Projects have ranged from humble, utilitarian buildings to the most iconic National Historic Landmarks in the West. Liz's rehabilitation design work includes the unique niche of 'High Altitude Preservation' in the most challenging climates. Liz finds great professional value in contributing to the **stewardship of these sites for the benefit of future generations.**

LEADING AN EXPANDED PRESERVATION CONVERSATION

Over her thirty-year career, **Liz has initiated the convergence of conversations of preservation and sustainability among her peers.** Her career began locally as a volunteer intern with the City of Boulder's Landmark Preservation Board and quickly expanded to include serving on the boards of several statewide preservation organizations and the founding of a regional chapter of the Association for Preservation Technology International. Through all these roles, she has served as both a strong leader and subject matter expert among her colleagues, helping to expand understandings and the evolution of preservation practice today. Liz's past regional volunteer endeavors enable her to be an effective leader for AIA in identifying needs, developing content, and sharing knowledge.

Liz's voice for the AIA includes testifying to lawmakers in support of historic tax credit legislation and serving on the AIA National Honors Awards Jury where she successfully **advocated for the value of designing with existing buildings, resulting in 25% of the projects awarded as existing and/or historic.** Most recently, Liz has served on the national AIA Historic Resources Committee (HRC) for the past five years, as **a leader and a voice for the 8,600 AIA members of the Knowledge Community.** In 2024, she produced a highly successful Taliesin Colloquium on "Adaptations in Preservation," which provided a platform for the AIA's recently published Building Reuse Guide. Additionally, having founded and served as co-chair of an 'SOI Standards Committee' advocating for the need for its flexibility of interpretations, **she amplifies the current policy initiatives of the Advisory Council for Historic Preservation to support challenges facing preservation architects today.**



PROFESSIONAL EXPERIENCE

Anderson Hallas Architects, PC
Principal, 2011-Present
President 2018-Present
Golden, CO

Andrews & Anderson Architects, PC
Golden, CO
Senior Associate, Project Manager, Project Architect, Job Captain, 1998-2011

Coburn Development
Boulder, CO
Architectural Intern, 1993-1998

City of Boulder
Boulder, CO
Landmarks Board Intern, 1992

EDUCATION

Master of Architecture
University of Colorado Denver, 1996-1998

Bachelor of Environmental Design
University of Colorado Boulder, 1990-1994
Outstanding Graduate Award, 1994

REGISTRATIONS & AFFILIATIONS

American Institute of Architects (AIA)
1999-Present

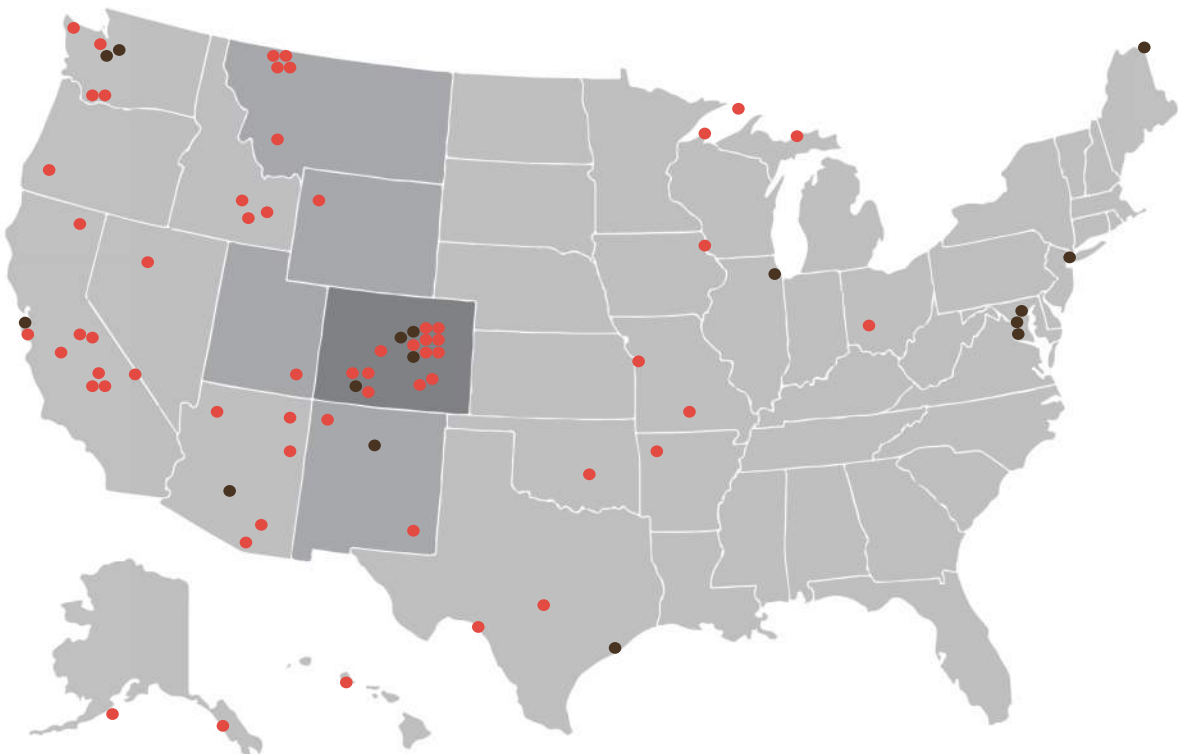
Licensed Professional Architect:

Arizona	Kansas	Ohio
Arkansas	Michigan	Oklahoma
Colorado	Minnesota	Oregon
Iowa	Missouri	South
Idaho	Montana	Dakota
Indiana	New Mexico	Washington

National Council of Architectural Registration Boards (NCARB) Certificate Holder
1999-Present

US Green Building Council (USGBC)
LEED AP BD+C 2005-Present

MAP OF SIGNIFICANT WORK



LEGEND: Area of Impact

- AIA National Historic Resources Committee (HSR) Advisory Board Region
- Rocky Mountain Chapter of Association for Preservation Technology (APTi) Region
- Colorado Preservation Inc., History Colorado & Colorado Historical Foundation Region
- Significant Projects
- Giving Back: Community Involvement/Speaking Engagements/Design Juries



SPERRY CHALET (NHL)
Glacier National Park, MT

2018-2020 | Principal in Charge
Design & Architect of Record

When Sperry Chalet burned in a 2017 forest fire, it was mourned around the world. An impassioned response helped fund restoration of its historic charm. To comply with modern code for the new interior construction, Liz deployed discrete strategies to retain the original character of the chalet. Special consideration of fire resistant materials were chosen for the design to increase resiliency, and the project is Net Zero with the benefit of seasonal occupancy.

Liz led the design from initial meetings through construction of this beloved backcountry respite to return it to its previous glory and protect it from future hazards.

Please refer to the full exhibit.



PAINTED DESERT CAMPUS (NHL)
Petrified Forest National Park, AZ

2022-2023 | Principal in Charge:
Scoping & Schematic Design

This Richard Neutra designed National Historic Landmark suffered from soil compaction issues from day one due to faulty construction. With the Congressionally funded Great American Outdoors Act, Liz was brought on board to design the rehabilitation of the 13 buildings across the campus, inclusive of hazardous materials, selective demolition, landscape restoration, comprehensive drainage and roofing mitigations as well as code, accessibility and full systems rehabilitations for a more resilient and sustainable future.

Liz led the multidisciplinary design team, oversaw the documentation efforts, led the sustainable rehabilitation design and facilitated the stakeholder decision making meetings regarding design scope and budget.



MIKE MANSFIELD FEDERAL BUILDING AND U.S. COURTHOUSE (NR)
Butte, MT

2020 | Architect of Record

Built in 1904, this GSA-classified "legacy building" required attention - both interior and exterior. Following the firm's work on a Building Preservation Plan, which included an exterior rehabilitation, Liz served as Architect of Record of the final phase including the modernization of the second floor judges chambers. Work included selective demolition, systems upgrades and accessibility interventions, all integrated in a historically sensitive manner.

Liz's leadership included design direction, reviewing the interdisciplinary team coordination, and quality control of the drawings and specifications. Budget constraints required a recalibrated design to align scope with available funding.



BEAVER MEADOWS VISITOR CENTER (NHL)
Rocky Mountain National Park, CO

2016-2021 | Principal in Charge
Design & Architect of Record

Designed by Frank Lloyd Wright's Taliesin Associated Architects, the Beaver Meadows Visitor Center is the main portal at Rocky Mountain National Park to millions of visitors annually providing orientation and education. In addition, the 1968 National Historic Landmark serves as Park Headquarters and Administration.

Liz led design direction and the multidisciplinary design team, working closely with park staff and Colorado SHPO to provide a sensitive rehabilitation design that retained the mid-century modern character and returned the "luster" of this Taliesin gem that had been lost over the years.

Please refer to the full exhibit.



MANY GLACIER HOTEL (NHL)
Glacier National Park, MT

2013-2017 | Principal in Charge
Design & Architect of Record (final
phase of Lobby & Annex II)

Poised among Continental Divide peaks, a majestic valley and lake, Many Glacier Hotel is an international destination, hosting 300,000 visitors each summer. Anderson Hallas led the first comprehensive interior rehabilitation of the hotel in its nearly 100 years of existence.

Liz was key in driving a sustainable design approach for the rehabilitation. For over 13 years, Liz worked on the project to create a finalized polished design that featured salvaging historic elements and installing high-efficiency systems. Liz's role evolved from the initial phases of the overall project as Project Architect/Manager culminating in the final phase of the Lobby & Annex II to serve as Principal in Charge and Design and Architect of Record.

Please refer to the full exhibit.



BRECKENRIDGE COMMUNITY CENTER & LIBRARY (NR)
Breckenridge, CO

2012-2015 | Principal in Charge
Design & Architect of Record

The Town of Breckenridge, Summit County Library District, and private donors partnered to adaptively re-use an historic 1909 school. The rehabilitation design included full system upgrades (electrical, mechanical, plumbing and structural retrofits) along with a new two-story reading room with breathtaking views to the west.

Liz's design balanced preservation and sustainability goals of energy efficiency with envelope and systems upgrades. Liz led the multidisciplinary team and rehabilitation design, from initial site investigations through construction. She oversaw the development of drawings and specifications as well as quality control oversight.

Please refer to the full exhibit.



APOSTLE ISLANDS LIGHT STATIONS (NR)
Apostle Island National Lakeshore
Bayfield, WI

2009-2014 | Design Architect &
Project Manager

Dotting the shores of Lake Superior's islands in northern Wisconsin, the historic Apostle Islands Lighthouses guided shipping vessels for over a century and now host thousands of tourists each year.

Liz led the design team to create a comprehensive Historic Structures Report (HSR) and rehabilitation drawings for five of the seven Apostle Island Light Stations. The HSR helped the National Park Service prioritize and allocate the limited budget for rehabilitation across 27 buildings and all five light stations.

Liz's role evolved from architect on the HSR to manager of the rehabilitation including field investigations, development of design and specification documents as well as the team's quality control oversight.



SILVERTON SCHOOL (NHL)
Silverton, CO

2010-2012 | Design & Architect of
Record

When an antiquated coal-fired heating system gave up the ghost, it was time for Silverton School to become more sustainable. That focus became part of Liz's vision for creating a more sustainable resilient school while honoring the historic fabric of the structure. A new elevator made the building accessible, while several upgrades made it energy efficient – including rehabilitation of the original windows, added insulation, and completely new mechanical and electrical systems which aided in earning the entire campus the LEED for Schools Gold certification.

Liz's role included in depth field investigations, leading the design and multidisciplinary team through all phases, and as the main contact during construction.

Please refer to the full exhibit.



MONTROSE CITY BUILDINGS
Montrose, CO

2004-2008 | Project Manager &
Project Architect

The City of Montrose sought a master plan to guide the rehabilitation of three historic buildings in their downtown. Following the master plan, Liz designed a phased rehabilitation approach for the buildings.

Liz designed creative holistic solutions that transformed the former Elks Building to City Council Chambers, the historic library to a vibrant City Hall, and the original fire department to City offices. Each of the buildings included code upgrades, energy efficient solutions and full ADA access for a more equitable governmental center.

Please refer to the full exhibit.



BEAUMONT HOTEL (NR)
Ouray, CO

1998-2003 | Project Architect

A grand hotel in the rugged mountains of southwestern Colorado, the Beaumont was originally constructed to attract tourists, entice railroad development, and bring big investment to Ouray. Built in 1886 and boarded up for over 30 years, this iconic landmark had become an eyesore in the community. The scope of work included a comprehensive rehabilitation of this boutique hotel, including structural repairs, wholesale HVAC and electrical system upgrades, and a sensitive approach to the interior finishes.

As one of the earliest projects in her career, Liz took a hands-on role as Project Architect. She learned immensely about careful coordination and preservation from her experienced team members and was responsible for the design drawings from design through construction.

Please refer to the full exhibit.



FORT MORGAN CITY HALL
Fort Morgan, CO

1999-2004 | Project Architect

This project included a two phased rehabilitation of the vacant City Hall building to create functional municipal offices and City Council Chambers. Phase 1 included masonry and window repair, cornice restoration, and ADA compliance updates. Phase 2 involved a complete interior and systems rehabilitation. Funded in part with several state grants, Fort Morgan now has a City Hall with modern technology and efficiency, all while preserving the building's historic character.

Liz's role included field investigations, rehabilitation design and production of the drawings and specifications, as well as being the point of contact throughout construction.



LITTLETON MUSEUM
Littleton, CO

2000-2003 | Project Architect

In 2000, the City of Littleton sought to expand its museum to keep pace with its rapid community growth and ambitious educational goals. Inspired by the site's existing International Style residence. Anderson Hallas designed a new museum facility, which balanced meeting the rigorous museum quality standards to protect the collections with welcoming the community to enjoy and learn. The new facility provides exhibit space, classrooms, lecture spaces, a gift shop, offices, workshops and kitchen facilities, all beautifully designed to meet stringent environmental, acoustical, technological, and security requirements.

This project serves to demonstrate Liz's portfolio of a dozen or so new construction projects, which have benefited from her preservation experience and detailing acumen.



AHWAHNEE HOTEL AND COTTAGES (NHL)
Yosemite National Park, CA

2024 (Active) | Principal in Charge: Historic Architecture (Electrical Upgrade)

The Ahwahnee Hotel offers a fine lodging experience unique in the NPS system with elegant finishes throughout including terrazzo, stenciling, plaster, wrought iron detailing and timber framing. Long overdue for electrical upgrades, NPS selected Liz, with Stantec serving as project lead, to tackle this complex wholesale electrical upgrade including energy efficient lighting. Liz analyzed the historic building to provide a zoned prioritization plan for the work.

Liz's role consists of field investigations, overseeing historical research and documentation and coordinating with the electrical team for a holistic approach to the interventions required of the electrical system rehabilitation. The project is currently in the Schematic Design phase.



SCOTTY'S CASTLE CAMPUS (NR)
Death Valley National Park, CA

2016+ (Active) | Principal in Charge / Rehabilitation Design Architect

Following catastrophic flooding in 2015, Liz has been assisting the park find more resilient solutions for this unique complex of buildings in a very harsh desert environment. The project has included threading through a new energy efficient HVAC system in the iconic castle, as well as an adaptive reuse design of the original garage as a Visitor Center, and comprehensive rehabilitation design for several outbuildings to serve as park support offices, each requiring code and accessibility updates.

Liz's role as Principal in Charge/Rehabilitation Design Architect has consisted of leading design efforts, field investigations, leading the multidisciplinary team, facilitating stakeholder decision making, and providing quality control oversight. Her collaborator for this complicated project is her partner, Wells Squier, as California Architect of Record.



UNION PRINTERS HOME (NR ELIGIBLE)
Colorado Springs, CO

2022+ (Active) | Principal in Charge: Historic Architecture

For over a century, this 92,000 sf building provided skilled nursing care for newspaper printers from across the country. Vacant since 2020, the campus was sold to a local ownership team to initiate a legacy rehabilitation and planned redevelopment honoring its restorative health roots. Sasaki Associates invited Liz to be the Historical Architect for the project.

Liz's role as Principal in Charge of Historic Architecture has included field investigations, research, client consultations on the benefits of designation and rehabilitation tax credits, as well as advisory design services to the Saaski team on rehabilitation and compatible addition design. The project has completed concept design and initial site approvals and awaits capitol development partners.



YOSEMITE MUSEUM (NR & NHL ELIGIBLE)
Yosemite National Park, CA

2024+ (Active) | Principal in Charge / Rehabilitation Design Architect

The "original" museum of the National Park Service, Liz was selected to carefully rehabilitate the exterior of the building while it awaits funding for a comprehensive interior rehabilitation. Housing important collections artifact storage, public facing museum functions and park offices, the building is currently at risk with site drainage and roofing leaks infiltrating the building.

Liz's role as Principal in Charge/Rehabilitation Design Architect includes design direction field investigations (including discovering that the main roof in this seismic zone was built without sheathing) scoping and phasing conversations with the client, oversight of technical rehabilitation design details and providing quality control. Her collaborator is her partner, Wells Squier, as California Architect of Record.

SIGNIFICANT AIA VOLUNTEER ROLES

AIA National Historic Resources Committee

- 2020-2024 Term (2023 Chair)

AIA Awards Jury Member

- Washington Council Civic Awards 2024
- Baltimore Design Awards 2020
- National Honor Awards 2016

AIA Colorado

- Awards Committee Member 2019
- Leadership Institute 2017
- Architectural Intern Mentor Program 2004-2009

AIA Denver, Colorado

- Preservation Co-chair 2001-2004

AIA HISTORIC RESOURCES COMMITTEE

National Representation | 2020-2024
Chair, board member, committee volunteer
Refer to Exhibit

AIA HRC is the original Knowledge Community within the AIA and is a national platform representing 8,600 AIA members. The committee pioneers the future of historic preservation, with a new agenda for sustainability and resilience.

Liz Hallas has been a crucial member in ushering a new age of preservation with her leadership impact. As chair of the annual Taliesin West Colloquium 2024, she gathered diverse voices and leaders in the field to discuss critical issues facing historic preservation today. Liz led efforts to partner and liaison with affiliated organizations such as the National Park Service and the National Trust. As founder and current co-chair of the HRC Standards Task Force, she saw a need to provide practicing architects with better tools to interpret the Secretary of the Interior's Rehabilitation Standards when advising clients on rehabilitation projects. **She has successfully collaborated to create trainings and educational events to better serve AIA members**, including four sessions at the AIA 2024 Conference.

MENTORSHIP & COMMUNITY INVOLVEMENT

Colorado Historical Foundation Board of Trustees

- Easement Committee Member, 2019-Present
- Chair of JEDI Committee, 2021-2023

History Colorado State Historical Fund

- Grant Program Technical Reviewer, 2004-Present

Women in Design

- Principal's Committee Member, 2016-Present

Colorado Preservation Inc. (CPI)

- Board Member, 2012-2018
- Chair, 2016

Saving Places Conference (CPI)

- Chair, 2013-2015
- Committee Member, 2016-Present
- Speaker, 2012, 2014-2016, 2023-2024

Dana Crawford Awards Gala (CPI)

- Chair, 2014-2017

APTi Rocky Mountain Chapter

- Founding Member, 2003
- Past Chair/President, Board Member 2003-2009

Evergreen Episcopal Church Building

- Committee Member, 1999-2000
- Committee Member, 2016-2018



"Congratulations are due to HRC (AIA Historic Resources Committee) leadership, especially Jill Gotthelf, SueAnn Pemberton, and **Elizabeth Hallas**. They found a powerful way to promote AIA's compelling priorities, engage those whose authority impacts our ability to practice effectively, and built a strong foundation for future collaboration. It may not have involved moving a bill on the Hill, but it was textbook advocacy work."

-Carl Elefante, FAIA, AIA National Past President, Regarding leadership of 2023 Taliesin Colloquium

HISTORY COLORADO / STATE HISTORICAL FUND

Statewide Representation
Colorado | 2004-Present
Grant Reviewer & Advisory Board Council Member

The State Historical Fund, led by History Colorado, supports historic preservation and archaeology projects statewide, distributing 5,525 grants totaling approximately \$361 million awarded since its inception in 1990.

Technical Expertise: Liz serves as a subject matter expert (SME) to advise on proper preservation techniques to promote long term stewardship and wise use of funds, which assists with the prioritization of the distribution of funding across the state on preservation/adaptive reuse projects with an equitable lens.

COLORADO HISTORICAL FOUNDATION (CHF)

Statewide Representation
Colorado | 2019-Present
Easement Committee Member, Board of Trustees, Member

Colorado Historical Foundation is a statewide organization that conserves historic places, adapts old buildings for today's needs, and offers support to the places that provide public access to history through the deployment of resources entrusted in its care. The Foundation partners with private entities, public agencies, nonprofit organizations, and informal coalitions to keep history alive and accessible to all.

Leadership Impact: Liz brought a new voice to the board (generational and gender) and has assisted CHF in strategic planning for growth with a wider arc of impact, including serving as the JEDI Chair, to successfully lead the adoption and integration of justice, equity, diversity, and inclusion priorities into the standard operations of the organization.



COLORADO PRESERVATION INC (CPI)

Statewide Representation
Colorado | 2012-Present
Board member, Chair, Committee Volunteer

CPI is a statewide preservation organization supporting communities of all demographics. The organization hosts a nationally recognized annual conference (2nd to National Trust Conference in attendance).

Leadership Impact: Liz has served in many leadership roles including the Board, Conference Committee, and as chair of the annual fundraising event. She assisted the struggling organization to weather turbulence and led the organization through to stability. **Liz has mentored 10+ emerging professionals to likewise volunteer and share knowledge with CPI.**

Technical Expertise: Served as a speaker at various conferences, presenting topics from design review, project case studies, to code compliance and sustainability/resiliency topics.

ROCKY MOUNTAIN CHAPTER OF THE ASSOCIATION FOR PRESERVATION TECHNOLOGY INTERNATIONAL (APTi)

Statewide Representation
Colorado | 2003-2009
Founder & Board Chair

RMC-APT is a regional chapter of the international organization that advances research, training, and the sharing of information relating to preservation technology and the historic preservation of buildings

Leadership Impact: Along with several colleagues, Liz founded the regional chapter (CO, MT, NM, UT, WY) and actively led the group for over 7 years. She has supported the chapter for over 20 years and seen its growth to be a thriving and stable organization in the region with strong ties to the international organization. **Liz has mentored several emerging professionals to evolve as active chapter/international community leaders.**

AIA AWARDS, HONORS, & RECOGNITION

2024

AIA Washington Council

Civic Design Awards Juror

2023

AIA National

"Future Focused" Video Campaign Celebrated Architect

AIA Colorado

Firm of the Year Award 2023 - **Refer to Exhibit**

2022

AIA National

AIA Awards Task Group Member

2021

AIA Colorado- Design Excellence Award

Sperry Chalet Restoration

2020

AIA Colorado

Featured as one of the women architects projected on the May D&F Tower Denver

AIA Baltimore Council

Design Awards Juror

2019

AIA Colorado - Award of Distinction

Many Glacier Hotel Rehabilitation

2016

AIA National

Design Honor Awards Juror

2013

AIA Colorado

Firm of the Year Award 2013

2008

Architect Colorado

Liz Hallas featured in Article, "Making the Old New Again"

OTHER AWARDS, HONORS, & RECOGNITION

2022

Traditional Buildings

Liz Hallas featured in "Who's Who" list by editor Pete Miller

International Union of Bricklayers and Allied Craftworkers Best Reconstruction Project Award

Sperry Chalet Restoration, Glacier National Park, MT

2021

Traditional Building Palladio Award

Sperry Chalet, Glacier National Park, MT

2018

Institute of Classical Art and Architecture Newman Award Certificate of Merit

Preservation/Restoration/Adaptive Reuse/ Many Glacier Hotel Rehabilitation

Traditional Building Palladio Award Historic Rehabilitation

Many Glacier Hotel, Glacier National Park, MT

2015

Colorado Preservation, Inc. - State Honor Awards

Breckenridge Community Center, Breckenridge, CO

2009

History Colorado, Stephen Hart Award

Montrose Elks Building, Montrose, CO

2008

Colorado Preservation, Inc. - State Honor Awards

Montrose Elks Building, Montrose, CO

Downtown Colorado, Inc. - Governor's Award for Downtown Excellence

Montrose Elks Building, Best Adaptive Reuse

2004

Governor's Award for Historic Preservation

Inaugural Award Beaumont Hotel, Ouray, CO

National Park Service Save America's Treasures-Presidential Award

Beaumont Hotel, Ouray, CO

2003

National Trust for Historic Preservation Honor Award

Beaumont Hotel, Ouray, CO



2023 AIA Colorado Firm of the Year



2020 Sperry Chalet Team



2009 Montrose Elks Team

PUBLICATIONS

2018

Preservation Magazine, National Trust for Historic Preservation

Project Featured: Many Glacier Hotel, Spring 2018 "Glacial Retreat" By Nate Schweber

Traditional Building

Project Featured: "Anderson Hallas Architects' Rehabilitation of Many Glacier Hotel" By Emily O'Brien
June 2018

National Trust Forum

Invited Blog Guest Writer for Many Glacier Hotel feature
October 2018

2017

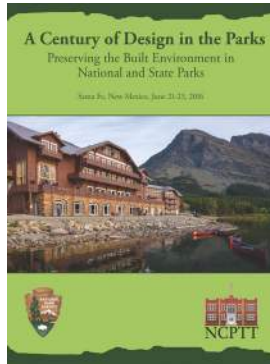
Colorado Municipal League

Author of "Preservation: from Planning through Construction" article for quarterly magazine
April 2017

2016

National Center for Preservation Technology and Training (NCPTT)

"A Century of Design in the Parks"
Symposium, part of the National Park Service Centennial Initiative Presenter and Co-author of "Many Glacier Hotel: The 100 Year Rehabilitation"
June 2016



2015

Colorado Construction

Author of "Through Innovative Partnerships, Transforming a Historic School"
August 2015

2014

National Trust for Historic Preservation

Project Featured: "Colorado's 1911 Silverton School Hits Preservation High" by David Weible

2008

GEO Outlook

Project Featured: Montrose Elks Building
"Geothermal Blends Technology & History" by Marie Kadavy

Historic Structures Reports (HSR) for the National Park Service Coauthor and/or Principal in Charge:

- 2024 – Sitka National Historic Park Geodetic House HSR
- 2024 – Yosemite National Park Three Pines Campground HSR (17 buildings)
- 2024 – Sequoia National Park Grant Grove Cabins and Lodgepole Market HSR and Rehabilitation (82 buildings)
- 2023 – Mount Rainier National Park Ohanapecosh Mission 66 Comfort Stations HSR and Rehabilitation (5 buildings)
- 2022 – Tule Lake National Monument Segregation Center Warehouses HSR (3 buildings)
- 2022 – Mount Rainier National Park Rustic Comfort Stations HSR (18 buildings)
- 2022 – Apostle Islands National Lakeshore West Bay Club Lodge and Icehouse HSR (2 buildings)
- 2021 – Pictured Rocks National Lakeshore Grand Marais Harbor of Refuge Lifesaving Station HSR (3 buildings)
- 2021 – Rocky Mountain National Park Shadow Mountain Fire Lookout HSR and rehabilitation
- 2020 – Saguaro National Park George Clayton Greene House HSR (2 buildings)
- 2019 – Keweenaw National Historic Park Quincy Mine Office/Calumet and Hecla Library HSR (2 buildings)
- 2019 – Glacier National Park Lake McDonald Cabins HSR (12 buildings)
- 2013 – Harry S Truman National Historic Site Truman Farm House, Garage, Root Cellar, and Barn HSR (4 buildings)
- 2011 – Apostle Islands National Lakeshore Light Stations HSR and Rehabilitation (27 buildings)

SIGNIFICANT PRESENTATIONS AND SPEAKING ENGAGEMENTS

2024

AIA Historic Resources Committee (HRC), Taliesin Colloquium - Organizer and event Chair for "Adaptations in Preservation: Concepts, Contrasts and Collaboration"

Refer to Exhibit

AIA'24: Co-host of the Knowledge

Communities Panel: 2024 Firm of the Year (AIA Committee on Design, Committee on the Environment, Historic Resources Committee)

Saving Places Conference (CPI) - Moderator and Presenter of "Sustaining our Future by Honoring Our Past"

2023

AIA Historic Resources Committee (HRC), Taliesin Colloquium – Moderator of "The Evolution of the Secretary of the Interior Standards" Keynote Presentations Panel

Saving Places Conference (CPI) – Moderator and Presenter of "Cracking the Code: Energy Codes in Historic Preservation"



2021-2022

National Trust for Historic Preservation, Past Forward Conference – AIA Historic Resources Committee (HRC) Host of "Virtual Networking" (Fall 2021-2022)

2019

National Trust for Historic Preservation, Past Forward Conference

Presenter of "Sperry Chalet Reconstruction – Lessons from Wildfire Recovery"

Conservation Center for Art and Historic Artifacts

Invited presenter for "Scaling Environmental Recommendations for Historic Sites" for the NEA grant series.

2018

AIA Colorado

Invited Panelist, "Business of Architecture" Seminar

AIA Colorado

Testified on behalf of AIA Colorado at the State Capitol for the Reauthorization of the Colorado State Historic Preservation Tax Credits

2017

American Cultural Resources Association (ACRA) – Webinar Panelist for "Hosting a Successful Internship Program: A Win/Win"

University of Colorado at Denver

Invited Panelist for "Women in Architecture"

2016

National Center for Preservation Technology and Training (NCPTT), "A Century of Design in the Parks" Symposium, part of the National Park Service Centennial Initiative – Presenter and Co-author of "Many Glacier Hotel: The 100 Year Rehabilitation"

Downtown Colorado Inc., Annual Conference Presenter of "Activating Lost Downtowns with Re-purposed Designs" (September 2016)

Friends of the Denver Public Library – Invited Panelist for "Women in Preservation"

2014

Saving Places Conference (CPI)

Creator and Facilitator of "Design Review Yay or Nay" Interactive Session, with audience voting and guest panelists debate the merits of additions and infill projects in historic neighborhoods (2014-2016)

2012

USGBC Colorado, Green Schools Summit Presenter for "Rehabilitating the Silverton School: A Marriage of Sustainability and Preservation" LEED Gold

"Liz, you were an Excellent Host! Bravo and thank you!"

-Ashley Wilson, FAIA (in regards to 2020 Saving Places Past Forward Conference host for Architects/Design Professionals Event National Trust for Historic Preservation)



3 | EXHIBITS

DEMONSTRATING SUSTAINABLE PRESERVATION



EXHIBIT 3.1
Breckenridge
Community
Center
NR



EXHIBIT 3.2
Silverton
School
NHL



EXHIBIT 3.3
Montrose City
Buildings
NR



EXHIBIT 3.4
Beaumont
Hotel
NR

REHABILITATING NATIONALLY SIGNIFICANT LANDMARKS



EXHIBIT 3.5
Many Glacier
Hotel
NHL



EXHIBIT 3.6
Beaver
Meadows
Visitor Center
NHL



EXHIBIT 3.7
Sperry Chalet
NHL



EXHIBIT 3.8
High Altitude
Preservation

EXPANDING THE PRESERVATION CONVERSATION



EXHIBIT 3.9
AIA HRC
2024 Tallesin
Colloquium



EXHIBIT 3.10
Firm
Leadership/
AIA Colorado
2023 Firm of
the Year

NR - National Register
NHL - National Historic Landmark

3.1 EXHIBIT

Project Name

Breckenridge Community Center and Library Adaptive Reuse and Rehabilitation

Location

Breckenridge, Colorado

Elevation Above Sea Level

9,600 ft

Design Firm

Anderson Hallas Architects, PC

Design and Architect of Record

Elizabeth Hallas, AIA

Completion Date

2015

Role of Candidate

Principal in Charge, Design and Architect of Record, Substantially Responsible for the Design

Design Excellence

Design for Equitable Communities:

Provides subsidized community and nonprofit spaces, with wifi for all. Provides ADA access to entire building

Design for Change/ Integration:

Resilient adaptive reuse strategies

Design for Energy: Operational energy efficiency and 250 tons of carbon savings of embodied energy

Awards/Publications

2015 State Honor Award Colorado Preservation Inc.

12+ Numerous local articles

SYNOPSIS

This historic 1909 schoolhouse had many uses in this remote mountain town over its first century. The Town purchased it in 2010 to protect this historic community landmark within its National Register Historic District and hired Liz to re-envision it for its second century and beyond.

CHALLENGE

At the outset, the design challenge was how to best utilize this newly vacant building for the highest and best use of the community. Liz worked closely with the Town Council, County Commissioners, the Library Board, town staff, SHPO and multiple stakeholders to identify appropriate uses and work through the programming and design. With her expertise of sustainable preservation, Liz was able to blend and balance the priorities of maintaining the historic integrity of this local landmark, yet designing solutions to meet the town's new Green Energy code.

OUTCOME

The design transformation adeptly synthesized the wide-ranging user groups of a first run movie theater, with the library's needs while providing community and non-profit spaces. Liz designed a breathtaking library reading room in the former gymnasium with creative design moves of exposing the mining era trusses and inserting a mezzanine to enhance interior spaces while showcasing the mountain views to the west. The community coalesced around the project and was able to provide 25% of the funding through grants and fund-raising efforts, with Liz playing an integral part of leading tours, generating renderings and designing specific aspects for donors throughout the building. Both the local and national historic designations were maintained and enhanced by removing past "remuddle" efforts, with the completed rehabilitation enabling it to win a statewide Honor Award. This adaptive reuse saved over 250 tons of embodied carbon, provided a long term resilient design in this harsh climate and introduced sustainable strategies of stealth insulation, energy efficient lighting systems and highly efficient HVAC systems intricately threaded through this historic building to reduce operational carbon.







Declaration: "I have personal knowledge that Elizabeth Hallas, AIA played a significant role in the rehabilitation design of the Breckenridge (Harris) Community Center." Name: Dale Stein, PE, Capital Projects Manager, Summit County



After: East Elevation with new cupola and entry overhangs

3.2 EXHIBIT

Project Name

Silverton School Rehabilitation

Location

Silverton, Colorado

Elevation Above Sea Level

9,300 ft

Design Firm

Anderson Hallas Architects, PC

Design and Architect of Record

Elizabeth Hallas, AIA

Completion Date

2012

Role of Candidate

Project Manager, Design and Architect of Record, Substantially Responsible for the Design

Design Excellence

Design for Energy: LEED Gold for schools with 700 tons of carbon savings of embodied energy

Design for Equitable Communities:

Enhanced public learning spaces for the 21st century; ADA access to entire campus

Design for Change: Resilient strategies for high altitude climate

Awards/Publications

National Trust for Historic Preservation 2/3/2014 article

Engineering News Record 11/21/2013 article

SYNOPSIS

The abrupt failure of this remote mining town's K-12 school's 98 year old coal fired boiler was the catalyst for seeking funding support for a resilient and holistic campus rehabilitation. The 1911 school building and 1937 Works Progress Administration (WPA) era gymnasium located in the Silverton National Historic Landmark District serves as the "Hub of the Community" for the hearty year round population of 600 residents.

CHALLENGE

Balancing the needs of the school, as well as the varied community uses, including theater, exercise facilities, private function rentals, community meals program, and a library; provided for a robust programming effort by Liz. Likewise with the budget coming from five separate funding sources, balancing the grant requirements demanded attention to detail, especially with the state funded preservation grant and newly adopted state energy efficiency grant initiatives for educational facilities. Fortunately, Liz had the requisite expertise to balance preservation with sustainability.

OUTCOME

Liz's integrated design approach resulted in achieving both LEED Gold for Schools as well as successfully navigating the preservation funding and approvals through the Colorado State Historic Preservation Officer (SHPO). Rehabilitation design included retaining the historic fabric yet strategically upgrading insulation throughout this heating dominated locale. Detailed WUFI analysis of the load bearing masonry was performed which indicated adding insulation would not harm the historic masonry. Liz proposed a significant design intervention to reintroduce and rebuild the original lost front entrance where only a shadow of its outline remained on the brick facade, having previously been replaced with an inelegant "shops" garage. Liz carefully researched historic photographs, performed investigative demo, and designed the new code compliant entry which restored the luster of the original entry and circulation patterns throughout the building. Likewise, careful integration of an elevator was needed across this 3 story (5 floor elevations) historic building, providing equitable access to all. Design solutions honored the historic corridors, doors and transoms with an overhaul of all the building systems including new electrical, HVAC and fire suppression systems carefully coordinated with the team to weave through the building, yet minimize the visual imposition within the century old building. This rehabilitation saved over 700 tons of embodied carbon and was returned to its position as the "Hub of the Community," to great acclaim.



"...the renovated school, which is a gem. Thank you so much. It really is something special."

-Anthony Edwards, Silverton Resident and Owner's Representative



Before: Stairwell



Before: Library



After: Library



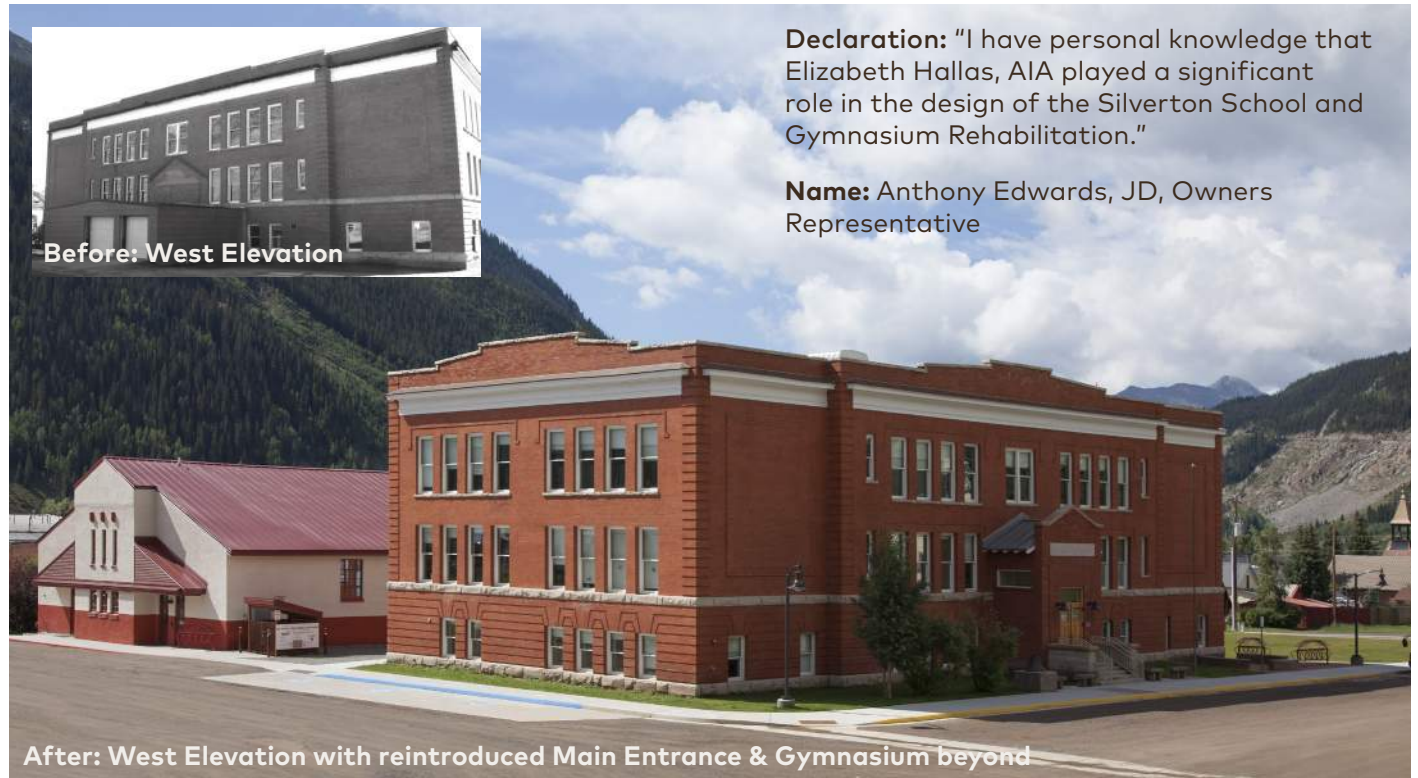
After: Hallway



After: Stairwell



Before: West Elevation



After: West Elevation with reintroduced Main Entrance & Gymnasium beyond

Declaration: "I have personal knowledge that Elizabeth Hallas, AIA played a significant role in the design of the Silverton School and Gymnasium Rehabilitation."

Name: Anthony Edwards, JD, Owners Representative

3.3 EXHIBIT

Project Name

Montrose City Buildings
Rehabilitation

Location

Montrose, Colorado

Elevation Above Sea Level

5,800 ft

Architecture Firm of Record

Andrews & Anderson Architects

Architect of Record

Nan Anderson, AIA

Completion Date

2008

Role of Candidate

Project Architect and Manager,
Collaboratively Responsible for the
Design

Design Excellence

Design for Economy: Catalyst
project for historic downtown core

Design for Integration: Civic hub
was revitalized to better serve the
needs of citizens

Design for Energy: Provides energy
efficient upgrades with 600+
tons of carbon savings and the
integration of geothermal

Awards/Publications

2009 History Colorado, Stephen
Hart Award

2008 Colorado Preservation, Inc. -
State Honor Awards

2008 Downtown Colorado, Inc. -
Governor's Award for Downtown
Excellence

SYNOPSIS

The project included the adaptive reuse and rehabilitation of three separate City owned buildings including the City Hall, Fire Department, former Brotherhood of the Protective Elks Order (BPOE) building all for civic uses.

CHALLENGE

New leadership within the City tasked Liz and the design team to adaptively reuse and rehabilitate a phased project of several historic downtown buildings to promote the value of the City's historic downtown core with hopes of educating and catalyzing downtown property owners to do the same.

OUTCOME

As Project Architect, Liz designed creative holistic solutions that transformed the former Elks Building to City Council Chambers and offices, the historic library to a vibrant City Hall, and original fire department to City offices. Each of the buildings included code upgrades, energy efficient solutions and full ADA access for a more equitable civic center. The project successfully served as a catalyst for the community and laid the groundwork for the City successfully becoming a Certified Local Government (CLG) with significant economic reinvestment as a "Main Street Community" within Colorado. Liz's design work seamlessly coordinated the full systems integration to conceal and best enhance the historic character and features of the original buildings. Embodied carbon savings of an estimated 600 tons and further significant operational carbon savings were achieved with the introduction of a ground source heat pump system along with building envelope improvements. With Liz's sustainable preservation expertise, the project garnered many statewide awards, including the highest honor by the Governor highlighting the successful balance of preservation and sustainability.





Before: Exterior (Elks)



After: Exterior (Elks)



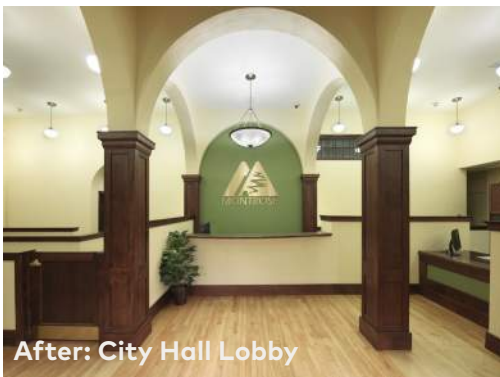
After: Council Chambers (Former Elks Ballroom)



Before: Council Chambers (Subdivided)

"I write to let you and your team know what a great job all of you did on the Elks Building/City Hall. I know that I personally am one of many Montrose citizens who enjoy using the renovated building. The interior is very pleasant and receptive to its many uses, plus we get the added pleasure of walking past our old building and knowing it is here to stay. Thank you."

-Karen Dean, Montrose Resident



After: City Hall Lobby



"I have personal knowledge that Elizabeth Hallas, AIA played a significant role in the design of the Montrose City projects working with me as the Project Architect."

Nan Anderson, FAIA, Former Partner and Principal of Andrews & Anderson Architects

3.4 EXHIBIT

Project Name

Beaumont Hotel Rehabilitation

Location

Ouray, Colorado

Elevation above Sea Level

7,800 ft

Architecture Firm of Record

Andrews & Anderson Architects

Architect of Record

Nan Anderson, AIA

Completion Date

2003

Role of Candidate

Project Architect, Collaboratively
Responsible for the Design

Design Excellence

Design for Integration: Legacy
rehabilitation revitalized this long
vacant building

Design for Change: Resilient design
detailing to withstand harsh
climate

Design for Economy: Catalyst
project for reinvestment in Ouray

Awards/Publications

2003 National Trust for Historic
Preservation Award

2004 Preserve America Presidential
Award (Save America's Treasures)

2002 Governor's Award for Historic
Preservation (Inaugural)

2003 Sunset Magazine "A New Day
for Ouray" by Larry Borrowsky Fall
2003

SYNOPSIS

Having been boarded up for thirty years, the building had become an eyesore and albatross for this small mining community. Following a tax sale, new owners sought to create a legacy for the town by rehabilitating the building and reinvesting to support local businesses.

CHALLENGE

This 1887 local landmark had seen no maintenance for over three decades and experienced significant structural damage including a partial roof collapse due to heavy snow loading in this mountain town. Balancing new uses that would be financially sustainable in this small town, while rehabilitating the building was the challenge.

OUTCOME

Liz carefully documented and assessed the building, followed by a feasibility study, and then a full rehabilitation design to support the new uses of a boutique hotel, retail spaces and dining and amenity options. As Project Architect, Liz developed the design layouts, code and ADA interventions, carefully integrated the systems throughout the building and developed the technical preservation details including roofing details and window rehabilitation seeing the project through from initiation to construction completion over the course of five years. The success of the project was honored by several prestigious preservation awards, but more importantly has served as a catalyst for tourism and spurred significant reinvestment within the entire National Register Historic District over the past two decades since its completion.





Before: Atrium



After: Atrium



After: Dining Room



Before: Dining Room

"I have personal knowledge that Elizabeth Hallas, AIA played a significant role in the rehabilitation design of the Beaumont Hotel working with me as the Project Architect."

Nan Anderson, FAIA, Former Partner and Principal of Andrews & Anderson Architects



After: Exterior View

3.5 EXHIBIT

Project Name

Many Glacier Hotel Lobby & Annex II Rehabilitation

Location

Glacier National Park, Babb, Montana

Elevation Above Sea Level

4,878 ft

Design Firm

Anderson Hallas Architects, PC

Design and Architect of Record

Elizabeth Hallas, AIA

Completion Date

2017

Role of Candidate

Principal in Charge, Design & Architect of Record, Substantially Responsible for the Design

Design Excellence

Design for Energy: High efficiency upgrades and 1900 tons of embodied carbon savings

Design for Equitable Communities:

Universal design solutions for equitable access throughout the building

Design for Economy: Maintain local job market for nearby Blackfeet Nation

Awards/Publications

2019 Award of Distinction, AIA Colorado

2018 Palladio Award, Traditional Building

2018 Jacques Benedict Award, Institute of Classical Architecture & Art

SYNOPSIS

In 1997, the National Trust for Historic Preservation listed Many Glacier Hotel, on its annual Endangered Places List highlighting the dire condition of this "Great Lodge" of the National Park Service. For over 13 years, Liz worked on the phased project to polish this gem with the culmination of this final stage of the Lobby and Annex II.

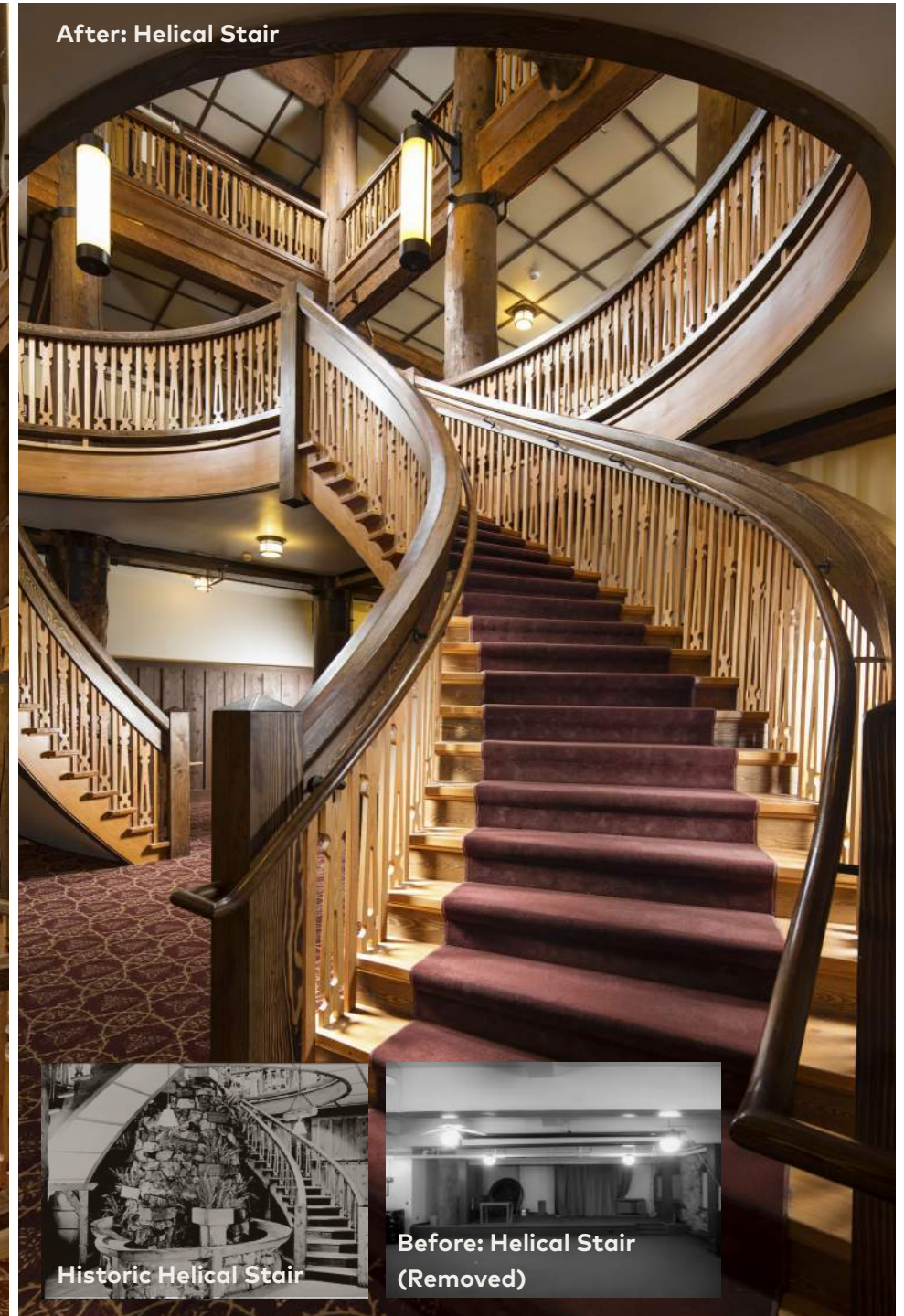
CHALLENGE

Life safety issues plagued the building and risked the lives of the 200,000 visitors each year. The project challenge was to design a complete interior rehabilitation inclusive of an overhaul of all systems, update to current codes and accessibility, and provide a seismic retrofit, all while maintaining the historic integrity and character of this National Historic Landmark.

OUTCOME

With the focus on life safety, Liz provided the public with a significantly safer experience, while also polishing the historic character that was lost, including the new code compliant helical stair - a primary feature of the lobby atrium. Design attention included the inconspicuous coordination and layout of all the new systems including electrical, fire protection, plumbing, and HVAC. Seismic strengthening was needed and included careful insertion of sheer walls and lateral bracing without compromising the building's historic character. Sustainable solutions included energy efficient lighting systems, high efficiency HVAC, and an estimated 1900 tons of embodied carbon were saved by rehabilitating this National Historic Landmark for generations to come. The hotel, both in its construction phase and its annual operations, provides vital employment in this remote area for the nearby Blackfeet Nation. The successful and sensitive rehabilitation design of Liz and her team won several prestigious national awards and was highlighted in national media publications.





3.6 EXHIBIT

Project Name

Beaver Meadows Visitor Center & Park Headquarters Rehabilitation

Location

Rocky Mountain National Park
Estes Park, Colorado

Elevation above Sea Level

8,400 ft

Design Firm

Anderson Hallas Architects, PC

Design and Architect of Record

Elizabeth Hallas, AIA

Completion Date

2021

Role of Candidate

Principal in Charge/Project Manager/ Substantially responsible for the Design

Design Excellence

Design for Change: Improved resiliency solutions for longevity

Design for Well Being: Improved workspaces benefit morale

Design for Energy: High efficiency HVAC and lighting solutions as well as embodied carbon savings

"I have personal knowledge that Elizabeth Hallas, AIA played a significant role in the rehabilitation design of the Beaver Meadows Visitor Center."

Emmeline Morris, RLA
National Park Service Project Manager

SYNOPSIS

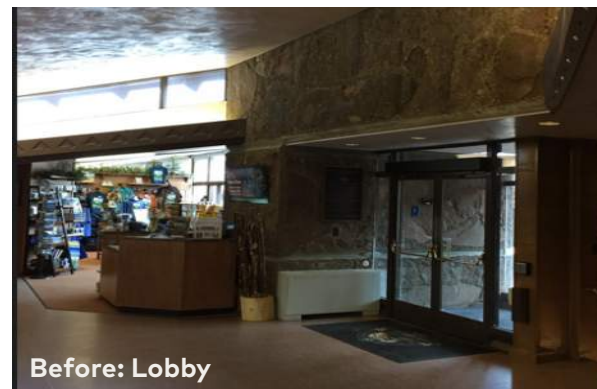
Plagued with thermal comfort issues from day one, this 1967 National Historic Landmark was designed by Taliesin Associated Architects, Ltd. as an example of the Park Service Modern Architecture.

CHALLENGE

Liz was tasked with rehabilitating the building by providing full electrical and lighting upgrades, accessibility updates, overhauling the HVAC system, and threading through a new fire suppression system all the while respecting the streamlined modern aesthetic of the original design intent.

OUTCOME

Liz led her team to analyze the character defining features of this unique building and sensitively designed discrete solutions for the building and systems upgrades. With minimal interstitial space to conceal the new systems work, Liz carefully coordinated the routing and finishes impact, with the end result of providing a refreshed appearance, but nearly invisible alterations to this NHL building. Morale within the staff working here has been improved with the rehabilitation, specifically hazardous material remediation, improved thermal comfort and an overall reinvestment in the long neglected work areas. Sustainability strategies included highly efficient HVAC systems, improved insulation strategies, and energy efficient lighting and distribution systems. Further, the success of the rehabilitation served as a catalyst within the NPS to honor its modern historic buildings, and directly influenced the park to undertake another full rehabilitation of the modernist Kawuneeche Visitor Center on the western edge of the park several years later, currently underway and also led by Liz.



3.7 EXHIBIT

Project Name

Sperry Chalet Restoration

Location

Glacier National Park, West Glacier, Montana

Elevation Above Sea Level

6,560 ft

Design Firm

Anderson Hallas Architects, PC

Design and Architect of Record

Elizabeth Hallas, AIA

Completion Date

2020

Role of Candidate

Principal in Charge, Design and Architect of Record, Substantially Responsible for the Design

Design Excellence

Design for Change: Improved resiliency strategies to minimize future fire risk

Design for Integration: Community fought to save building

Design for Discovery: Serves as respite in rugged Wilderness area for discovery and delight

Awards/Publications

2021 Award of Excellence, AIA Colorado

2021 Palladio Award, Traditional Building

2021 National Council of Structural Engineers Association Excellence Award

SYNOPSIS

This beloved National Park Service Historic Landmark (NHL) is a cherished remote backcountry chalet open to the public in Glacier National Park. It was nearly lost in the 2017 Sprague wildfire. Within two heroic summer seasons, Sperry Chalet was brought back to life to welcome guests for the next 100 years. Liz was selected to lead the restoration of the Sperry Chalet following its catastrophic wildfire.

CHALLENGE

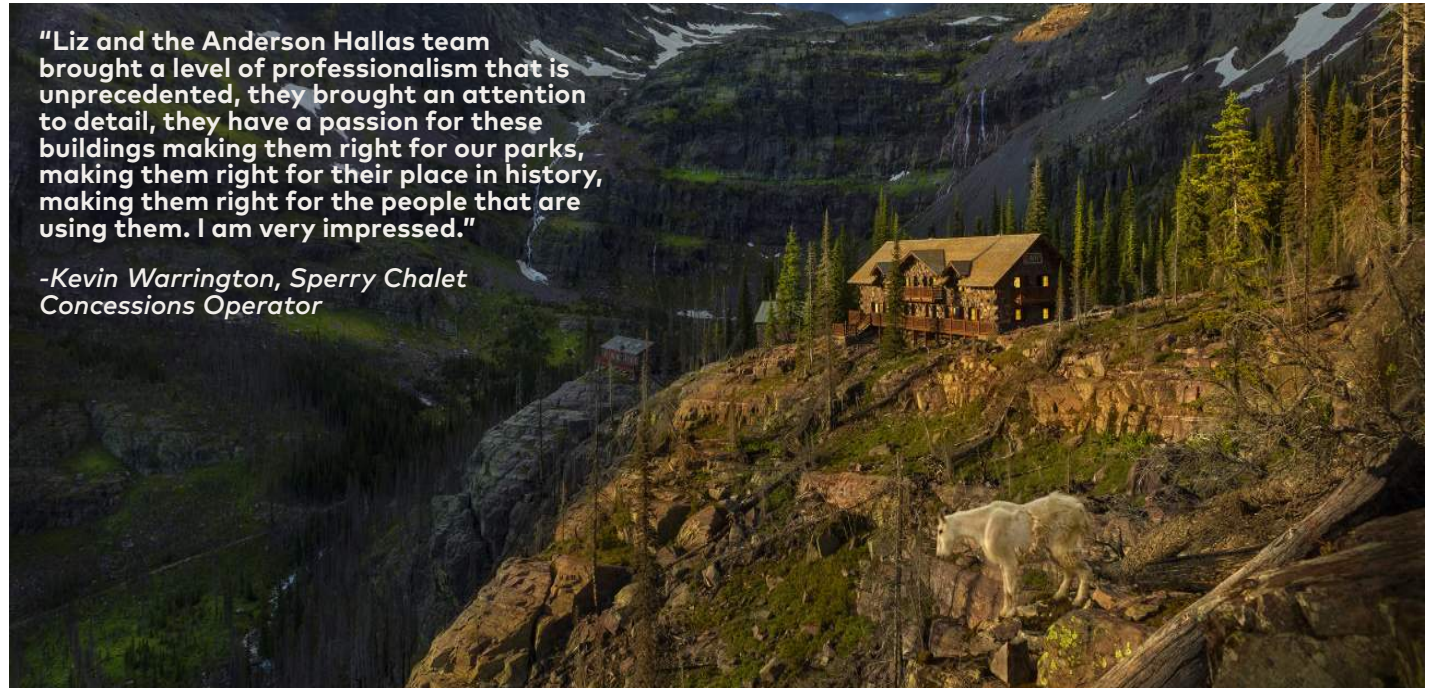
This remote wilderness site has no road access, requiring Liz and the team to hike up 7 miles of 3000' elevation gain in grizzly bear country for site investigations. Located within the current Secretary of the Department of the Interior's political district at the time, the project garnered unprecedented political attention and subsequent funding, complete with expedited schedule expectations. Liz led the team from initial meetings through construction of this beloved backcountry respite.

OUTCOME

With its National Historic Landmark designation in jeopardy due to the fire, Liz led the design of "recreating the Sperry experience" which included technical investigations, sensitive redesign solutions, and discrete code upgrades, all within the existing stone wall footprint. Design solutions included subtle room variations to alter the stair layout to meet new building code standards, as well as providing an accessible guest room. Discrete design details included the integration of lightning protection, code compliant guardrails, steel "flitch" beams within the logs, and fire rated separation walls between guest rooms. The award winning project was honored for both its design and attention to craft, highlighting Liz's thorough investigations, design and implementation support throughout construction. The completed project was able to retain its NHL status due to the sensitive redesign. The building reopened in 2020 welcoming international and local hikers alike. Estimated embodied carbon savings are 13 tons and the project is Net Zero in its remote Wilderness setting.

"Liz and the Anderson Hallas team brought a level of professionalism that is unprecedented, they brought an attention to detail, they have a passion for these buildings making them right for our parks, making them right for their place in history, making them right for the people that are using them. I am very impressed."

-Kevin Warrington, Sperry Chalet Concessions Operator





Before: 2017 Sprague Fire



After: Interior Room



After: Interior gathering room



Before: Post 2017 Sprague Fire



After: Exterior View with curious four legged neighbors



After: Restored Deck & Balcony

Declaration of Responsibility: I'm pleased to express my personal knowledge that Elizabeth Hallas, AIA played a significant role in the redesign for Sperry Chalet.

Steven Byrd, Chief of Commercial Services, Glacier National Park

Before: Historic Image

3.8 EXHIBIT

Project Name

High Altitude Preservation Expertise (Multiple)

Location

Multiple - see map

Design Firm

Anderson Hallas Architects, PC

Completion Date

Ongoing

Role of Candidate

Principal in Charge - Design and/or Architect of Record (varies per project depending on state)

Design Excellence

Design for Water: both as a utility resource, but also with freeze potential, a holistic and integrated approach is needed

Design for Economy: phased construction due to seasonality can effect construction budgets

Design for Energy: attention to climate zones and thermal envelope design as well as overall energy efficiency measures

Design for Well-Being: higher altitudes can require both design and construction teams to be aware of oxygen limitations with exertion

Design for Discovery: often located in natural settings encouraging exploration

Design for Change: mitigate for the future climate change risks

SYNOPSIS

Liz has developed a unique design expertise with high altitude preservation projects, spanning eleven of the western states, with site elevations ranging from 3000 - 9600 ft above sea level. This work presents both architectural and operational considerations in the design phases, requiring careful holistic coordination.

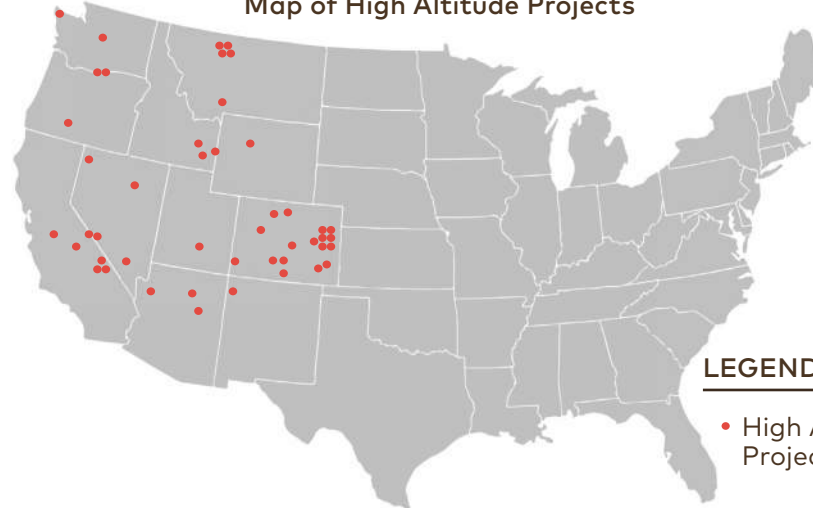
CHALLENGE

Rehabilitation design at higher altitudes brings an added complexity to projects, resilient solutions are essential. Design considerations include increased thermal performance of building envelopes, robust snow shedding and drainage details, as well as site planning for both snow storage and removal strategies. Likewise, building systems to withstand greater freeze potential, and heavier snow loads and depths are all critical to design.

DESIGN APPROACH

Resilient design and detailing solutions are critical to ensure longevity and reduce time intensive maintenance at historic buildings. An integrated design approach is needed to best anticipate the potential climate and natural hazards of a specific site. Liz's design strategies employed include inviting maintenance personnel to initial design meetings to assure their operational needs are considered early in the design, and then checking in throughout the design at reviews. Likewise, seasonality of construction with multiple phases being required, needing separate mobilizations, effecting construction budgets, must be anticipated with the client at the outset. Staging plans to illustrate weather needs are often generated to better communicate constraints to the bidding contractors and careful envelope detailing is essential for these harsh climate conditions.

Map of High Altitude Projects



LEGEND

- High Altitude Preservation Project Locations

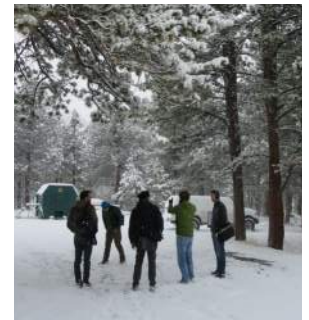
Liz assessing stone conditions, Sperry Chalet



Liz leading team meeting, Many Glacier Hotel



Liz meeting with park re: winter staging area needs, Beaver Meadows Visitor Center



Liz assessing cabins, Kelly Camp



3.8 EXHIBIT

CASE STUDY: Sperry Chalet Eave Detailing



CHALLENGE

The original wood shingles were a character defining feature of this NHL site, but risky in a wildfire prone location.

OUTCOME

Liz negotiated a compromise with NPS and SHPO with a detail of cedar shingles impregnated with fire retardant over a Class A fire rated cap sheet to serve as a Class A equivalent rated roofing assembly.

IMPACT

Sharing Knowledge: This solution has served as an approach precedent for other historic/wildfire interface projects in the NPS system.

IMPACT

Why is Liz's High Altitude Preservation Expertise beneficial?

- With an emphasis on resilient design, her work serves as a precedent and guide for remote sites with hard climate conditions.
- Educates client and overall multidisciplinary team the value of integrated solutions to approach these climate challenges.
- Promotes the longevity of design solutions by lengthening the life cycle and minimizing operational costs.
- Supports longer term stewardship with attention to detail to minimize maintenance time and efforts required.

Liz has been able to share knowledge with both clients and the next generation of preservation architects and engineers regarding these design complexities.

CASE STUDY: Shadow Mountain Fire Lookout

CHALLENGE

A remote fire lookout in the middle of a designated Wilderness zone, making maintenance operations and access difficult. Log stringer stone failure due to snow freeze/thaw over longterm prompted the closure of the building to the public due to safety concerns.

OUTCOME

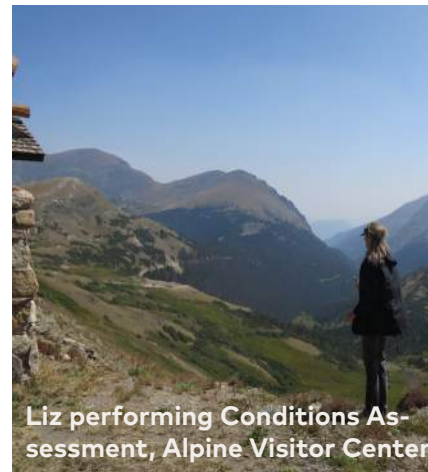
Liz led an integrated structural architectural solution and the result was a steel embedded log to carry the load of the snow, prevent wood rot, promote life safety, and lengthen the longevity of the assembly.

IMPACT

The completion will allow the ability to safely re-open the site for visitors to enjoy, and a reduction in regular maintenance at this remote site, saving operational time and budgets.



Shadow Mountain Fire Lookout Tower, Log Stair



Liz performing Conditions Assessment, Alpine Visitor Center

CASE STUDY: Beaumont Hotel Gutter Detailing



CHALLENGE

The mansard roof sheet metal gutter failed and allowed drainage to rot the wood supports and freeze thaw cycles to heavily damage the masonry below.

OUTCOME

Liz led a multidisciplinary structural/architectural approach provided adequate bracing for this gutter (also know as a "snow shelf") and the waterproofing was duplicated with an EPDM liner adhered to the new prefinished sheet metal gutter.

IMPACT

Resilient Stewardship: With a "belts and suspenders" approach, this detail has withstood for 20+ years with no buckling or leaking, precluding the need for further interventions, deterioration or cost incurred.

Declaration of Responsibility: "I have personal knowledge that Elizabeth Hallas, AIA plays a significant role in our firm's High Altitude Preservation Expertise. **Name:** Wells Squier II, AIA, Partner of Anderson Hallas Architects

3.9 EXHIBIT

Project Name

2024 AIA Historic Resources Committee Taliesin Colloquium: Adaptations in Preservation

Location

Taliesin West Scottsdale, Arizona

Organization

American Institute of Architects, Historic Resources Committee

Organizer

Elizabeth Hallas, AIA

Program Date

April 5-6, 2024

Role of Candidate

Chair - Program Designer, Organizer, and Facilitator

Design Excellence

Design for Change: Inspirational case studies to educate on adaptability and resiliency

Design for Energy: Special attention to climate zones and thermal envelope design relative to climate change, operational and embodied carbon savings

Design for Integration: Shared strategies of projects benefiting the triple bottom line

Design for Equitable Communities: Presentations on projects removing barriers to historic buildings

SYNOPSIS

Liz served as the designer, organizer and chair of the 2024 Taliesin West Colloquium - Adaptation in Preservation: Concepts, Contrasts, and Collaboration. This event was focused on the topic of Adaptations to our dynamic of climate, equity, and resiliency – the macro level of how organizations are adapting followed by the micro level of informative and inspirational case studies on a range of projects that successfully integrated adaptations.

CHALLENGE

Liz's goal was to provide an advanced forum to discuss the challenges facing preservation architects today, in collaboration with affiliated agencies and organizations to best support the learning opportunities available to the 8,600 members of the Historic Resources Committee.

OUTCOME

The Colloquium provided an in-depth setting to explore case studies on diverse topics of how the field of preservation has needed to adapt – from sustainability and resiliency, to seismic and security, to code and accessibility. Liz developed the theme, format, and curriculum of the 2024 AIA HRC Taliesin West Colloquium. Leading up to the event she researched case studies, provided direct outreach and organized the speakers. At the event, she served as the event leader and panel facilitator. The event served as a "soft introduction" of the AIA 2024 "Building Reuse Guide" prior to AIA'24 Convention. Twelve (12) AIA HSW continuing education credits were offered for attendees. **With the success of the 2024 Colloquium, Liz has been able to share knowledge with both clients and the next generation of preservation architects to better prepare them for the current and future challenges in the profession.**



Liz facilitating the Case Studies Synthesis Panel at the 2024 Colloquium

2024 Taliesin Colloquium AIA Survey Results:

Very Satisfied Rating: 95%

Recommend to a Colleague: 100%

Program met expectations: 100%

Program was well organized: 97%

Would you attend the next HRC Colloquium: 96%

3.9 EXHIBIT

"Thanks, everyone! I enjoyed the Colloquium and really appreciated the opportunity to participate. We find this to be a great forum to discuss these issues with the community of architects involved in historic preservation."

Brian Goeken, AICP
Chief, Technical Preservation
Services
National Park Service

"Thank you Liz for a wonderful and engaging 2024 Colloquium! Thank you! It was so wonderful to see everyone there and continue our discussions of adapting our preservation guidelines to meet modern issues."

Lorraine Minatoishi, Ph.D., AIA
President AEPAC

"This weekend's American Institute of Architects (AIA) HRC Colloquium, Adaptation in Preservation, at Taliesin West was as engaging as it was educational. Met so many wonderful industry professionals, and the Taliesin team made this a pleasurable experience. Special call out to Liz Hallas, AIA, Luz Angela Toro, and the whole of the Historic Resources Committee for making this a successful event."

Stirling Morris, AIA, Attendee

COLLOQUIUM AGENDA

Day 1: April 5, 2024

Keynote Speaker Jean Carroon, FAIA Goody Clancy
"Building Reuse is Climate Action"
Adaptations at Taliesin West
Panel #1: Sharing of Knowledge: Affiliated Organizations HRC, NPS, National Trust - Updates
Twilight Tour of Taliesin West

Day 2: April 6, 2024

Case Studies:
Farnsworth House (resiliency/flooding)
Oregon Supreme Court (seismic/security upgrades):
Duke Farms (operations/ sustainability)
Case Studies from AIA Guide on Building Reuse
LWCC Office Renovation - Eskew Dumez, Ripple
Custom Blocks Remodel - Mahlum
The Packing House - Quinn Evans
Panel #2: Sharing of Knowledge: Case Studies Synthesis



Declaration of Responsibility: "Having served with Elizabeth Hallas, AIA, on the Historic Resources Committee Advisory Group since 2022, I can personally attest to the significant role she played in the conception, design, and development of the 2024 AIA HRC Taliesin Colloquium: Adaptations in Preservation, held at Taliesin West in April, 2024." **Name:** Robert Burns, AIA, AIA HRC 2025 Chair

Key Attendee Take Aways (as published in the AIA Event Synopsis)

- The renovation and transformation of existing buildings is a significant part of the business of architecture and offers a significant opportunity for architects to address climate change. By 2050, about 65% of the projected U.S. building stock (in floor area) will be buildings that were already standing in 2022.
- The existing building stock around the world holds the key to navigating the environmental landscape—"Building reuse is climate action."
- Historic buildings—in fact ALL existing buildings—must adapt if they are expected to survive in today's complex, contemporary world, where all buildings face the onslaught of heat, rising tides and reduced potable water.
- Collaboration among stakeholders is the key to drive change required by today's shifting environmental circumstances for historic structures.
- The concept of "Radical Reversibility," when applied to the existing building stock, may be the best way to allow historic buildings to contribute to the resilience and environmental survival of the planet and this participation should drive greater tolerance of impact to historic resources.

3.10 EXHIBIT

Project Name

Firm Leadership, AIA Colorado
2023 Firm of the Year

Location

Golden, Colorado

Firm Attributes

70% Women Employees
34 Years as a Women-Owned
Small Business

Role of Candidate

President, Majority Owner,
Managing Partner 2018-current

Design Excellence

Design for Well-Being: Leading
a firm supporting inclusivity and
equity

Design for Change: Building a
resilient firm to adapt to dynamic
market forces

Design for Discovery: Nurturing
a firm which values curiosity
and creativity and provides
opportunities for professional
growth



**Anderson Hallas Architect's
Adopted Core Values**

SYNOPSIS

In 1998, Liz joined the small husband and wife firm of Andrews and Anderson as the 5th employee. Through her tenure she rose to become an Associate, Senior Associate and then was invited to become a Principal in 2011.

CHALLENGE

Successfully leading a small business in the dynamic architectural market yet providing stability and growth opportunities for a team of 22 is an immense challenge. Additionally, encouraging mentorship across the firm to provide leaders within the architectural community is the goal.

OUTCOME

Under Liz's leadership and having authored the nomination, Anderson Hallas won the 2023 AIA Colorado Firm of the Year. As a second generation owner she has led the firm through tumult including the recent pandemic challenges. Liz has successfully led the firm's certification as a federally recognized Women Owned Small Business (WOSB). Under her tenure as President, the firm has grown by over 25% and gained a national reputation for design excellence in Sustainable Preservation. With Liz's passion for sustainability, in 2024 the firm signed on for the AIA 2030 Challenge. Her 2024 initiative for the firm is leading the Strategic Planning effort called "AHead: Designing the Firm into the next 10 years" to prioritize professional growth opportunities for the next generation of leaders.



Declaration of Responsibility: I have personal knowledge that Elizabeth Hallas, AIA plays a significant role in the strategic and day to day development and leadership of the firm which attain the 2023 AIA Colorado Firm of the Year award. Name: Wells Squier II, AIA, Partner of Anderson Hallas Architects

"The jury selected Anderson Hallas for their depth of portfolio, their success on succession, and their family firm culture. Located in the front range of Golden, their work positively impacts communities across the State and the Country. A commitment to historic preservation, adaptive reuse, and environmentally conscious designs are prevalent. With the inclusion of testimonials, you got a real sense of their firm culture which is embraced by all. It felt like a place you would want to work and would find purpose in the work."

**2023 AIA Colorado Honor
Award Jury Member**

"Anderson Hallas is an adventure. It's not just our great mix of project types but in the way we approach every project. We challenge ourselves to ask the tough questions. Right now, we are working to push the boundaries of sustainability and resiliency for historic buildings."

**Laine McLaughlin, AIA, AH
Associate**

"I deeply appreciate that the firm maintains a high level of integrity, builds strong relationships with clients and consultants, and takes pride in high quality work that is beautiful, functional, and sustainable. I really am honored to work here."

**Rebecca Silva, AIA
AH Senior PM**



SPONSOR

THOMAS C. JESTER, FAIA, FAPT, LEED AP

Title

Principal, Chief Operating Officer - Quinn Evans

Professional Relationship to Nominee

Colleague, Friendly Competitor



REFERENCES

JAMES LINDBERG

Title: Senior Policy Director - National Trust for Historic Preservation

Relationship to Nominee: Colleague, Colorado organizations and AIA HRC

NAN ANDERSON, FAIA

Relationship to Nominee: Mentor, Retired Partner (*no current business affiliation*)

ELISA HERNANDEZ SKAGGS, AIA

Title: Associate Principal Page & Turnbull

Relationship to Nominee: AIA HRC Colleague, Friendly Competitor

GRANT CROSBY, AIA

Title: Historical Architect - National Park Service

Relationship to Nominee: Client, Colleague

SUE ANN PEMBERTON, FAIA, FAPT

Title: Professor, University of Texas San Antonio

Relationship to Nominee: AIA HRC, Colleague

CHRIS JONES, AIA

Title: Retired Historical Architect - National Park Service

Relationship to Nominee: Client, Colleague

SARAH GOLDBLATT, AIA

Relationship to Nominee: Colleague, Colorado organizations and AIA HRC