

This cover section is produced by the AIA Archives to show information from the online submission form. It is not part of the pdf submission upload.

2025 AIA Fellowship

Candidate Matthew Porreca
Organization LPA Design Studios
Location San Diego, California
Chapter AIA California Council; AIA San Diego

Category of Nomination

Object 1 (Design, Urban Design, Preservation) > Design

Summary Statement

Matthew Porreca elevates design by integrating performance, wellness, community and experience to create innovative work which is human-centered, inspiring environments which celebrates passive design as the path to achieve high performance results.

Education

Kansas State University, August 1989 - May 1995, Bachelor of Architecture

Licensed in:

California

Missouri

Employment

2020-Present LPA Design Studios, San Diego, California - Principal / Design Director

2007-2020 BNIM, San Diego, California - Principal + Studio Director

1996-2007 BNIM, Kansas City, Missouri - Associate Principal

1995-1996 WRS Architects, Kansas City, Missouri

October 8, 2024

Carl D'Silva, FAIA
CHAIR, JURY OF FELLOWS
The American Institute of Architects
1735 New York Avenue, NW
Washington, DC 20006

Re: Fellowship Nomination of Matthew Porreca, AIA

Dear Mr. D'Silva and the Jury,

I am honored to sponsor Mr. Matthew Porreca, AIA LEED AP BD+C, for elevation to the College of Fellows of the American Institute of Architects. Throughout this submission, you will find the achievements of a highly accomplished design professional who has elevated project performance to attain excellence across a diverse portfolio. Matthew's design process celebrates passive design strategies and demonstrates the critical role they play in our fight against climate change, regardless of a project's budget or scale. The support of his distinguished references is testimony to his significant impact on building performance, the respect he has earned from his peers nationwide, and his leadership in showing the profession a path to a net-zero future.

As a design leader, Matthew's work in urban environments exemplifies how a human-centered approach focused on building performance and energy efficiency can positively impact our communities at scale. These corporate, university and residential projects, through Matthew's leadership, have won 28 state and component AIA awards for design, as well as 12 national and international awards.

Matthew's talent, passion and leadership have had a profound influence on multiple market sectors. Notably, the Block D Makers Quarter, a speculative commercial office project, benefitted from his innovative approach to programming and building massing, resulting in a successful pilot project that set a new benchmark for other developers. His contributions to affordable and supportive housing have brought zero carbon ready all electric building designs – that are connected to nature and integrated into their communities – to those who need them most. In every case, his clients benefit from his fluency in sustainable practices and his design expertise, consistently delivering outstanding value.

Matthew has shared the lessons learned from his public and private sector projects to advance the dialogue on building performance and sustainability through speaking engagements at the National, State and Local level. His efforts have elevated the conversation around sustainable design, particularly among developers and higher education clients, raising the bar for design and performance expectations across the industry.

Matthew Porreca's design contributions and his unwavering commitment to performance and design excellence are to be commended. I trust the jury will find the accomplishments presented here compelling. Matthew will be a credit to the College as he has been to our firm, the Institute, and the architectural profession.

Sincerely,

LPA, Inc.



Wendy S. Rogers, FAIA, LEED AP BD+C
CEO

1: SUMMARY OF ACHIEVEMENTS



1.0 Summary of Achievements

Matthew Porreca elevates design by integrating performance, wellness, community and experience to create innovative work which is human-centered, inspiring environments which celebrates passive design as the path to achieve high performance results.

DESIGN EXCELLENCE: SUSTAINABILITY & INNOVATION

For almost thirty years, Matthew Porreca, AIA, LEED AP BD+C has been pushing the envelope of sustainability and passive design approaches across a diverse portfolio to achieve design excellence. He defines high performance design as the integration of 4 key design principles: performance, wellness, community and experience which shapes a design process by embracing project constraints while expanding project opportunities for unique approaches in elevating design. Matthew's innovative approach resulted in several high performance and sustainable building milestones for the profession, including downtown San Diego's first LEED Platinum + Zero Net Energy office building in 2019 (Makers Quarter); the first ZNE community college project designed to achieve Living Building Petal certification (Palomar College M+O); the largest naturally ventilated building in southern California (Pacific Center Research & Development); and, most recently, the largest steel modular project on the West Coast (El Cerrito Permanent Supportive Housing). His work has been recognized with 75 design awards over the last 10 years, including 28 AIA design awards throughout the United States and 12 national or international awards, including the Chicago Athenaeum American Architecture Award, Green Good Award, Architizer A+, Arch Daily and ENR's national "Best of the Best" sustainability award.

Matthew's holistic sustainable design approach is focused on performance, wellness, community and experience, resulting in projects at all scales that elevate human-centered design through experiential environments which embody environmental responsiveness, promote social connectivity as a key parti diagram approach, providing proportions and texture for a vibrant public realm. His work, from college campuses to affordable housing developments, connects the built environment to sustainable communities. His consistent design approach focuses on doing more with less, reducing materiality to reduce embodied carbon, while embracing budget constraints to elevate design through rigorous detailing, recognizing the relationship of proportion, scale and the delicate interplay of light and shadow to artfully create the built environment.

DESIGN EXCELLENCE: LEADERSHIP & ADVOCACY

Matthew's leadership and positive impact within the design profession is extensive. He views each new project opportunity as a pilot type project or proof of concept to advance design and the profession within the broader design community. For almost a decade, Matthew has designed all-electric buildings promoting carbon neutrality. His advocacy on projects at UC Berkeley and currently at UC San Diego has resulted in each campus deciding to take projects off their central plants, with projects designed with stand-alone all electric systems for carbon neutrality. This builds on his extensive experience designing Zero Net Energy buildings and an emerging high performance housing portfolio which exceeds the AIA 2030 Commitment, using an elevated performance baseline approach.

His leadership as a board member the San Diego Green Building Council led to the first Living Building Collaborative chapter in the country, which he co-chaired. As an advisory board member for the AIA Los Angeles, he helped start their Living Building collaborative modeled on the success in San Diego. His advocacy for sustainable communities includes a comprehensive planning and community engagement process for the Pacific Beach Eco District, a collaboration between AIA SD COTE and SDGBC.

A willing volunteer to honor design achievements and share knowledge across the profession, he has served on AIA design juries, university architecture program design reviews and has worked on numerous educational workshops and conference presentations to various national, regional and local conferences. These include AIA San Diego, AIA Arizona, AIA Los Angeles, Getting to Zero National Conference, SCUP National Conference, DBIA Regional, San Diego Housing Federation, and the upcoming Athletic Business National Conference. Over his career, Matthew has presented to thousands of young professionals to increase awareness nationally, regionally and locally on sustainability, high performance design and design excellence.

DESIGN EXCELLENCE: COLLABORATION & RESEARCH

Matthew's drive to elevate design stems from incredibly impactful design collaborations early in his career. He collaborated with Steven Holl on the Nelson-Atkins Museum of Art in 2007 which was recognized with a national AIA Honor Award; Moshe Safdie on the Kauffman Center in Kansas City, Lake Flato on UCLA Med Ed facility and, currently, the Sierra College Science Building; Moore Ruble Yudell on the UCLA Engineering VI complex, which included the first grey water system for indoor use in the city of Los Angeles; and currently with Foster & Partners on the San Diego Museum of Art West Wing Expansion. These partnerships and the exposure to different design processes by highly respected national and international practices have enriched his design process and made him a staunch advocate for the value of an inclusive, open collaborative design approach.

Matthew continues to refine and evolve his design process, which questions typical assumptions to explore opportunities to elevate human-centered design. From 2014-2018, he led a research collaboration with the Salk Institute for Biological Studies to measure the qualitative and quantitative benefits of how people responded to new passive design environments with enhanced daylighting and natural ventilation. The research pioneered the analysis of buildings from the well-being perspective, measuring the end user performance to facilitate decision making as a change management processes on future projects.

As a Principal and Design Director at LPA Design Studios, Matthew works with wide range of practice-focused teams across each of LPA's studio locations, leading a multi-discipline approach focused on exceeding the AIA's 2030 Commitment. He brings diverse project experience and holistic design approach to mentoring teams on the methodology of lean design principles and elevating design through high performance strategies. His leadership as a design director is focused on collaboration, supporting an inclusive design culture within the studio to promote discovery, research and design ideation, utilizing emerging technologies for visualization, client engagement and performance analysis to enhance design outcomes.

2: ACCOMPLISHMENTS



2.1 Accomplishments - Curriculum Vitae



Matthew Porreca AIA, LEED AP BD+C

Education

- 1995 Bachelor of Architecture, Kansas State University
- 1994 Centro Studi Citta di Castiglion Fiorentino, Italy

Professional Experience

- 2020 - Present LPA Design Studios, San Diego, CA
Principal / Design Director
- 2007 - 2020 BNIM, San Diego, CA - Principal / Studio Director
- 1996 - 2007 BNIM, Kansas City, MO - Associate Principal
- 1995 - 1996 WRS Architects, Kansas City, MO - Graduate Architect

Architectural Registrations

- 2007 - Present Missouri
- 2019 - Present California

Academic Honors

- 1995 Heinzelman Prize - Thesis Design-Award, Runner-Up

Academic Affiliations

- 2008 - Present Dean's Advisory Council, AP Design
Kansas State University
- 2008 - 2012 Architecture Professional Advisory Board, AP Design,
Kansas State University


Professional Affiliations

- 2007 American Institute of Architects
- 2008 LEED Accredited Professional
- 2017 National Council of Architecture Registration Board


2.1 Accomplishments - Project Experience

Significant Projects by Type Summary


Cultural

2027	San Diego Museum of Art - West Wing Expansion
2011	Kauffman Center for the Performing Arts
 2007	Nelson-Atkins Museum of Art - Bloch Building Expansion
2005	Nelson-Atkins Museum of Art - Parking Garage + KC Sculpture Park

Higher Education

2026	UC San Diego - RIMAC Expansion
2023	CSU Chico, Creekside Residence Student Housing
2020	UC Berkeley Moffitt Library, Center for Connected Learning
 2018	Palomar College, M+O Building


Science, Research & Innovation

2026	Sierra College Science Building
2018	CSU San Marcos - Integrated Sciences + Engineering Building
2017	Kansas State University, College of Agriculture FASTER Building
 2015	Pacific Center Campus - Amenities Building
 2014	Pacific Center Campus - Research + Development Building
2014	UCLA Engineering VI - Phase 1 & 2

Mixed-Use + Affordable Housing

 2025	Bethel AME - Bethel 1 Affordable Housing
 2024	FHCSD - El Cerrito Permanent Supportive Housing
2024	County of San Bernardino - Platinum Village + Substance Use Disorder Center
2024	American River One, Mixed Use Development
2023	Huntington Beach Navigation + Permanent Supportive Housing
 2022	Tribute Building
2022	Newton - Permanent Supportive Housing
 2021	Normandie Permanent Supportive Housing
 2021	Keeler Court Affordable Housing
 2021	Ivy Senior Apartments, Permanent Supportive Housing
2020	Park Boulevard Apartments
2018	Jacobs Center for Neighborhood Innovation - Affordable Housing


Commercial

2024	FHCSD Integrative Medicine & Wellness
2019	Super Block
 2018	Makers Quarter Block D
2018	Basic Agency Headquarters
2017	530B Renovations
2016	Rivo Holdings

Planning

2022	Harris Ranch Town Center Master Plan
2016	Jacobs Center for Neighborhood Innovation Master Plan
2015	Makers Quarter Master Plan
2012	Pacific Center Campus Master Plan

Civic

 2026	City of Tracy - Multi-Generational Recreation Center
2019	GSA Schwartz Federal Building & Courthouse Renovations
2018	County of San Diego - Live Well Center
2016	County of San Diego - Housing + Community Development Renovation

Historic Renovation


2023	UC San Diego - York Hall
2018	Makers Quarter - Coliseum Building

Healthcare

2026	FHCSD Integrative Medicine & Wellness
2026	Morongo Tribal Health Center
2025	County of San Bernardino Pacific Platinum Village Substance Use Disorder
2019	County of San Diego Live Well Center
2016	Stanford University Health Center at Pacific Center Campus
2012	UCLA Medical Education Building

Significant Engagements by Type Summary

Professional Organizations

 AIA Los Angeles - Living Building Collaborative
Advisory Board member, 2017

San Diego Downtown Partnership

Board Member, San Diego CA, 2016-2021

San Diego Green Building Council

Board Member, San Diego CA, 2012-2018

Living Building Collaborative - San Diego (SDGBC)

Co-founder + Chair, First Living Building Collaborative in the country.
San Diego CA 2015-2017

Biomimicry Institute - San Diego Chapter

Advisory Board member, San Diego, CA, 2014-2018

AIA San Diego - COTE Committee

Member, engagement with PB Eco District through collaboration with SDGBC
San Diego, CA 2009-2012

Educational Engagement

Kansas State University - AP Design

Dean's Advisory Council, Manhattan, KS,
2018 - current

Kansas State University - AP Design

Architecture, Professional Advisory Board, Manhattan, KS,
2015 - 2018

2.1 Accomplishments - Project Experience



**RIMAC Expansion & Renovation
UC San Diego**
San Diego, CA

2026 Anticipated

The RIMAC expansion will create a campus community and student hub which inspires students by placing fitness program on display. The design approach embraces the tight site constraints and creates a welcoming shaded front porch for student social space. The upper floor extends out to the west with a horizontal and vertical sun shade which maximizes the program area, providing shelter for the exterior spaces below. Biophilic design embodies the natural wood material of the 40' high climbing wall which is integrated with a roof monitor for passive ventilation and enhanced daylighting. The fitness spaces offer views of the ocean and mountains while connecting the occupants with nature.

Size: 23,00 GSF

Framework for Design Excellence:

Zero Net Energy - decoupled central plant
Enhanced daylighting w/ facade design
Passive design w/ Natural Ventilation

Role of Nominee:

Principal / Design Director



**Science Building
Sierra College CCD**
Rocklin, CA

2026 (Q4 2024 Construction Start)

In collaboration with Lake Flato Architects, this multi-disciplinary science building showcases museum exhibits, a planetarium, and science labs and learning environments supported by informal student & faculty collaboration spaces. Designed to nurture student-professor relationships, the new facility supports the College's goals of fostering environmental awareness, promoting diversity in education, and enhance the cultural needs of the local community. The new science building represents an additional gateway for K-12 students throughout the district who visit the natural history museum exhibits to showcase the science programs being offered with learning on display to inspire the next generation of students at Sierra College.

Size: 65,920 GSF

Framework for Design Excellence:

Enhanced daylighting w/ roof monitors
Structure as finish - reduced materials
High Performance facade - deep recesses, overhangs and vertical sunshades

Role of Nominee:

Principal / Design Director



**Multi-Generational Recreation Center
@ Pescadero Park**
Tracy, CA

2026 (In-Construction)

The new recreation center breathes new life into a neglected park and offers a community amenity for users across generations. Anchored by a net-zero energy building, the project blends indoor spaces and landscape seamlessly, uniting a dynamic program and creating a regional destination focused on health and well-being. At the heart of the design lies inclusivity and the aim to serve the entire community. A thoughtful balance of active and passive program adapts to different uses throughout the day and year. A comprehensive master plan reorganizes the park, diversifies its ecology with a new landscape, provides mobility connectivity, fostering a sense of community and encouraging intergenerational interaction.

Size: 52,200 GSF

Framework for Design Excellence:

Zero Net Energy - all electric
Solar chimney - passive ventilation

Role of Nominee:

Principal / Design Director

Select Award:

AIA Orange County - Merit 2023



**Family Health Center of San Diego
Integrated Medicine & Wellness**
San Diego, CA

2026 (Q4 2024 Construction Start)

A Net Zero Health Center for under-served communities which is designed to take a proactive approach to preventative medicine. The new Integrated Medicine and Wellness Center will aim at the causes of illness with a design focused on nutrition, fitness, human performance and research. The design dismantles the often intimidating experience of visiting a doctor with transparency and education programs on display along the street and a human performance running track on the roof. Daylight, natural ventilation, views and a healing garden provide biophilic connections for patients, while contributing to a zero net energy design. The building is all electric for carbon neutrality and will generate all its own energy with the roof mounted pv panels.

Size: 78,932 GSF

Framework for Design Excellence:

Zero Net Energy - all electric
Passive design w/ Natural Ventilation
High Performance facade - terra cotta rain screen with sunshades

Role of Nominee:

Principal / Design Director

2.1 Accomplishments - Project Experience



Bethel I
Bethel AME Church
San Diego, CA

2025 (In-Construction)

This infill affordable housing project which provides supportive housing for previously un-housed veterans. This project will serve as the pilot project for YIGBY (Yes In God's Backyard) which helps to develop underutilized Church land to benefit vulnerable members of the San Diego community. The design concept breaks down the scale along the street frontage with the recessed porch and social balconies while connecting the residents to one another promoting community along with connecting to neighborhood. The roof deck + balcony amenities create a connected porous frontage and public to private transition into the building. Centralized all electric systems were utilized to promote carbon neutrality and zero net energy.

Size: 23,000 GSF

Framework for Design Excellence:
Zero Net Energy - all electric
Solar chimney - passive ventilation

Role of Nominee:
Principal / Design Director

Select Award:
AIA Orange County - Honor 2022

Matthew Porreca AIA



Park Boulevard Apartments
San Diego, CA

2025 (In-Construction)

The facade design is a texture of overlapping apertures between the corrugated metal and wood siding with the balconies as a conceptual mesh which is activated by the residents. The design maximizes this tight infill site with an offset plan which complements the site geometry. This program includes affordable units, retail space for street activation and parking levels with car lifts to maximize parking provided while limiting the construction area. The design takes advantage of San Diego's climate by expanding the living space to the outdoors for a seamless indoor/outdoor living experience by providing all the residents expansive balconies and a amenity roof deck with green roof which take advantage of city views.

Size: 82,861 GSF

Framework for Design Excellence:
All electric building
High Performance facade - deep overhangs
Green roof for ecology + stormwater

Role of Nominee:
Design Principal



FHCS El Cerrito Permanent Supportive Housing
San Diego, CA

2024

This mixed-use project takes aim at health inequity and homelessness, with 172 units of affordable and supportive housing and an expansive community health clinic. The design focuses on cutting carbon emissions and enhancing the well-being of residents. The design embraces the use of single use recycled shipping containers as a rigorous module in its five levels of modular housing. The units are organized to shape a series of roof gardens and decks along a circulation spine to promote social connections for the residents. The courtyards open up to the north and have porosity to the south to allow light and the prevailing northwest breezes to flow into the site.

Size: 225,374 GSF

Framework for Design Excellence:
All electric - centralized systems
Passive design - daylighting and natural ventilation stratifies.
Solar Thermal + PV systems

Role of Nominee:
Principal / Design Director

Select Awards:
AIA Orange County - Honor 2021
SDGBC - Sustainable Marvel Award 2024



American River One
Sacramento, CA

2024 (Entitlements)

The project concept design started with a simple idea of creating vibrant public spaces from the moment you enter the site to a series of pedestrian spaces organized through each of the towers and varying scale of spaces designed for the amenity spaces on the podium and sky gardens. This mixed-use development embraces biophilic design principles throughout. The urban design approach embraces its location along the American River connecting the resident to nature and the urban downtown Sacramento context in how the massing provides multiple view corridors which allows light and air to flow through the site. The plan organization promotes equity to as many units as possible in providing views to nature and views to downtown in this dynamic site location which will transform the neighborhood for future development.

Size: 628,873 GSF

Framework for Design Excellence:
All electric building
High Performance facade - deep overhangs and vertical/horizontal sunshades

Role of Nominee:
Principal / Design Director

2.1 Accomplishments - Project Experience



York Hall Renovation
UC San Diego
San Diego, CA

2023

This mid-century historic four building complex serves as the main undergraduate biology and chemistry facility on campus with its distinctive 300-foot long column arcade features 800 precast concrete fins, which had been slowly deteriorating in the marine air for over 50 years. The seismic design concept took a “doing more with less” approach by specifying surgical modifications to the buildings including replacement of several belled fan-vaulted columns. The team used fiberglass formwork inspired by boat hull design to perfectly replicate the original columns’ unique geometry while adding rebar to address seismic deficiencies. The fins were individually evaluated utilizing advanced modeling and visualization technology tools as part of the design process to document the historic structure and define the renovation scopes.

Size: 122,000 GSF

Role of Nominee:
Principal / Design Director

Select Award:
NCSEA - National Excellence in Structural Engineering awards 2023

Matthew Porreca AIA



Creekside Residence, Student Housing
CSU Chico + Butte-Glenn CCD
Chico, CA

2023

A Net Zero student housing residence hall which was designed to achieve an overarching goal of maximizing student access to housing and thus project affordability and efficiency are key in delivering this goal. Safety, maintainability, and sustainability are additional key goals for this project to provide affordable, vibrant, and inclusive student housing. The design leverages its campus location along the Big Chico creek by organizing the building into two narrow floor plates for passive design approaches while bending with the river to form an internal courtyard space with a restorative landscape which extends the creek ecology throughout the site. The design promotes social connections with the site amenities on the ground floor and courtyard along with student lounges located on each floor’s most prominent locations.

Size: 100,850 GSF

Framework for Design Excellence:
Zero Net Energy - all electric
Passive design w/ Natural Ventilation
Site ecology - Restorative landscape

Role of Nominee:
Principal / Design Director



Tribute Building
Sacramento, CA

2022 - (Entitlements)

Unlike many low-rise housing developments this project was designed to a rigor and scale which celebrates the use of a concrete frame which is exposed throughout the project as the primary materiality in this modernism approach to housing. The design concept sets itself apart in elevating a clean rhythm and proportional system illustrated with the deep balconies on the upper levels and restrained palette of materials. The design is experiential by recessing the ground floor along the street to enhance the pedestrian experience while providing niches as an immersive storefront for art which integrates a mural by artist Wayne Thiebaud which extends across the facade to activate the street and animate the architectural design.

Size: 57,081 GSF

Framework for Design Excellence:
All electric building
Structure as finish - reduced materials

Role of Nominee:
Principal / Design Director

Select Award:
AIA Orange County - Merit 2022



Normandie Permanent Supportive Housing
Los Angeles, CA

2021 - (Entitlements)

This permanent supportive housing development has aspirational goals in transforming the entire delivery model for developing affordable housing in addressing the housing crisis in our communities. The design embraces the use of single use recycled shipping containers as a rigorous module in its massing which will be prefabricated off site modular units. The building massing scales down along the street and provides vertical roof gardens. The integration of landscape embraces biophilia in connecting people with nature to promote health and wellness. This provides ‘Housing First’ faster as permanent supportive housing is a foundation of recovery for individuals experiencing chronic homelessness, mental health conditions, and addictions.

Size: 52,200 GSF

Framework for Design Excellence:
All electric building
Green roofs - site ecology

Role of Nominee:
Principal / Design Director

Select Award:
AIA Orange County - Honor 2020



2.1 Accomplishments - Project Experience



Ivy Senior Apartments
Permanent Supportive Housing
San Diego, CA

2021

The unit plans are all micro studio units which were designed with an expanded amount of glazing to elevate the quality of the interior spaces. The design concept was based creating a nurturing secure courtyard space for the residents and in working with the irregular site geometry. The ground level includes the resident amenity spaces and on-site supportive services which are organized to create transparency along the street front and inward to the courtyard space linking the users to nature and the community. The courtyard is designed with a series of landscape mounds which provide a diversity of planting palettes to engage the residents while also providing residents planter boxes for gardening.

Size: 39,487 GSF

Framework for Design Excellence:

All electric - centralized systems
PV and Solar thermal Systems
EPA Indoor airPLUS

Role of Nominee:

Design Principal

Select Awards:

AIA San Diego - Honor 2023
AIA Kansas City - Merit 2022

Matthew Porreca AIA



Keeler Court Affordable Housing
San Diego, CA

2021

The design is focused on establishing a connected community within the development and setting residents up for success. This development provides affordable housing for families and veterans providing resident programs that contribute to resident empowerment, financial wellness, health and well-being, and children's academic needs. The design allows the minimization of solar heat gain to the units, provides access to views and daylight, and promotes natural ventilation. The development's hub of activity is the community courtyard where residents can enjoy indoor and outdoor amenities.

Size: 76,500 GSF

Framework for Design Excellence:

All electric - centralized systems
PV and Solar thermal Systems
Passive Design strategies

Role of Nominee:

Design Principal

Select Awards:

AIA San Diego - Merit 2022
San Diego Housing Federation
Project of the Year, 2022



Center for Connected Learning
UC Berkeley
Berkeley, CA

2020

The project scope was defined around the transformation the lower 3 floors of the existing mid-century Moffit undergraduate library into the Center for Connected Learning. The student focused program includes new student study space, general assignment classrooms, information research space, digital studios, maker space, student services, conference space and a cafe. The concept design was focused on creating strong visual connections between the floor to link the program spaces while allowing light and views to the exterior to penetrate deep into the central spaces of the existing building. The transformation integrates high performance all electric systems to align with campus carbon neutrality goals.

Size: 123,500 GSF

Framework for Design Excellence:

All electric - decoupled central plant
Enhanced daylighting w/ facade design

Role of Nominee:

Design Principal



SuperBlock
San Diego, CA

2018

SuperBlock is an innovative workplace in the I.D.E.A. District of East Village in downtown San Diego. The Idea Tower, concept re-interprets a typically Silicon Valley office park into a vertical urban campus. While providing the necessary density for growth projections, the tower maintains a strong relationship to the natural environment and daylight. Individual building blocks are elevated and connected by a continuous landscape and amenity infrastructure encouraging collaboration between tenants. Additionally, these buildings are connected by internal staircases allowing teams to easily expand and contract across levels. Facilitated by San Diego's welcoming climate, the unique relation to the exterior make the Idea Tower a vibrant, innovative workplace.

Size: 1,000,000 GSF

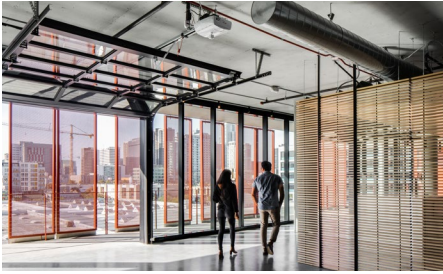
Framework for Design Excellence:

All electric development
Passive design w/ Natural Ventilation
High Performance facade - motorized shades

Role of Nominee:

Principal / Design Director

2.1 Accomplishments - Project Experience



Basic Agency Headquarters
San Diego, CA

2018

The office core was conceived of as a simple, elegant box (the BASIC box) made up of a series of smaller breakout rooms where users can meet, socialize, or work privately. These unique indoor/ outdoor spaces fit both the climate and the culture of San Diego. The overall office design was positioned in a way to best utilize the passive design strategies of the base building, Makers Quarter Block D. The building's western elevation connects users to the main exterior circulation spine with a series of sectional garage doors. When open, these doors allow western breezes to passively flow across the floor plate. The exterior venetian blind system utilizes real time sun attenuation technology to limit the amount of direct solar gain and glare.

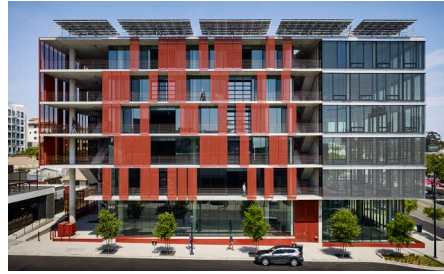
Size: 7,759 GSF

Framework for Design Excellence:

Zero Net Energy - all electric
Enhanced daylighting w/ facade design
Passive design w/ Natural Ventilation

Role of Nominee:

Design Principal



Makers Quarter Block D
San Diego, CA

2018

Designed as a collaborative office hub with public spaces to encourage interactions between the building occupants and the community with open vertical circulation systems, open collaborative balcony spaces, to reinforce a strong public realm. The highly flexible office suites utilize natural ventilation with garage doors and the high performance facade utilizes active shading systems to enhance daylighting and promote user preferences in operating their individual tenant spaces. The building is the first commercial office building in downtown San Diego to achieve Net Zero Energy and LEED Platinum certification.

Size: 53,325 GSF

Framework for Design Excellence:

Zero Net Energy - all electric
High Performance facade - operable and motorized sunshades

Role of Nominee:

Design Principal

Select Awards:

AIA San Diego - Citation 2018
AIA Kansas City - Merit 2018
AIA Kansas - Honor 2018
AIA Central States - Citation 2018
AIA Iowa - Merit 2018



Maintenance + Operations
Palomar College
San Marcos, CA

2018

The design will provide a diverse user group an active, high-performance workplace that fully utilizes innovative passive design principles. Innovative design strategies, such as thermal chimneys and roof monitors, create increased natural ventilation, lower building energy consumption, and decrease mechanical infrastructure. Other sustainable strategies, such as rainwater harvesting, renewable energy, and daylight harvesting, were incorporated to provide the user with a "long life, loose fit" building, which allows the Maintenance and Operations Complex to remain useful and operational well beyond the life many similar buildings.

Size: 28,000 GSF

Framework for Design Excellence:

Net Zero Energy - All electric
Solar chimney, passive ventilation

Role of Nominee:

Design Principal

Select Awards:

AIA San Diego - Merit 2019
AIA Kansas City - Honor 2020
AIA Kansas - Merit 2018



Integrated Sciences + Engineering
CSU San Marcos
San Marcos, CA

2018

The future College of Science and Mathematics will be designed to raise the profile, exposure, and visibility of CSU San Marcos; strengthen partnerships with local industries; support innovative learning and research on campus; and allow for a collaborative, interdisciplinary, & professional culture. The developed program and Zero Net Energy concept design for the College of Science and Mathematics, comprised of physics, computer science, software engineering, and electrical engineering departments. Primarily composed of teaching and research laboratories, classrooms, student spaces, and faculty and staff office spaces, the Integrated Sciences and Engineering Building will be the first phase in the design and construction of a series of projects that will support the growth of CSM.

Size: 110,000 GSF

Framework for Design Excellence:

Zero Net Energy - all electric
Passive design w/ Natural Ventilation
High Performance facade - motorized and fixed sunshades

Role of Nominee:

Design Principal

2.1 Accomplishments - Project Experience



Makers Quarters Master Plan
San Diego, CA

2015

Makers Quarter is both a place and a collective ethos inspired by the Maker Movement, which provides a creative environment to inspire entrepreneurs and artists to challenge convention and achieve new heights in innovation. This five-block development in downtown San Diego was planned to become a community with the conscious development of lifestyle, residential, and business properties, designed to reflect the artistic integrity of the neighborhood. The master plan is anchored by layers of open space and a set of key planning principles: Establish, enhance, and promote linkages; create a new employment hub; foster a walkable and healthy lifestyle; and create an authentic, dense, and sustainable place.

Size: 2M GSF / 5 downtown city blocks

Framework for Design Excellence:

Zero Net Energy - fuel cell
Passive design - building orientation, natural ventilation and enhanced facades

Role of Nominee:

Design Principal



Pacific Center Campus Amenities Building
San Diego, CA

2015

The building design concept is integrated and woven into an overall campus environment that is organized around properly scaled public spaces, public amenities, and clear circulation systems while integrating a green roof terrace deck to increase public space and strengthen the public realm. The great dining hall is a transparent pavilion with direct connections to outdoor dining terraces, overlooking the sports field and entry courtyard.

Size: 50,000 GSF

Framework for Design Excellence:

High Performance facade design
Passive design - natural ventilation
Green roof - restore ecology

Role of Nominee:

Design Principal

Select Awards:

AIA California Council - Merit 2017
AIA San Diego - Honor 2017
AIA Central States - Merit 2018
AIA Kansas City - Merit 2017
AIA Kansas - Merit 2017
AIA Iowa - Honor 2017
Chicago Athenaeum - American Architecture Award 2017



Pacific Center Campus Research + Development Building
San Diego, CA

2014

The design optimizes passive design strategies to achieve high-performance results while enhancing the interior environments for innovation and productivity. The building's east/west solar orientation and narrow floor plates promote natural ventilation and daylighting, and a high-performance facade design controls heat gain and glare. Thermal mass was utilized with its exposed concrete moment frame to provide thermal comfort, control vibration for research spaces and provide future flexibility.

Size: 357,000 GSF

Framework for Design Excellence:

High Performance facade design
Passive design - natural ventilation

Role of Nominee:

Design Principal

Select Awards:

AIA California Council - Merit 2018
AIA San Diego - Honor 2016
AIA Kansas City - Merit 2016
AIA Kansas - Merit 2016
AIA Iowa - Merit 2016
Chicago Athenaeum - American Architecture Award 2018



Pacific Center Campus Master Plan
San Diego, CA

2012

The campus master plan was developed as a deeply sustainable and powerful tool to support recruitment, boost productivity and enhance the corporate values - innovation | execution | partnerships. The master plan concept was focused on transforming the existing site from a vehicle-oriented development to a pedestrian-oriented campus environment. A key concept was to bring nature onto this site with a new native trail connecting the site to the Lopez Canyon trail on the north. The overall campus design weaves together natural free flowing spaces with refined, public-spirited environments as a common theme, which defines the new campus vision and embraces strong sustainable site strategies for water systems and native ecosystems into a cohesive holistic campus environment.

Size: 21 acre site

Framework for Design Excellence:

Stormwater management on site
Mobility plan - bikes, pedestrian, shuttle
Restores site ecology
Zero Net Energy - fuel Cell

Role of Nominee:

Design Principal

2.1 Accomplishments - Leadership, Advocacy and Research

Outdoor Classroom + Nature Play | Kate Sessions Elementary

San Diego, California | 2018-2020

This student enrichment at Kate Sessions Elementary was a community engagement pro-bono project. The vision was to transform an underutilized undeveloped area of the school property by planting trees, developing nature play elements, and defining two outdoor classrooms for student to learn about nature and to grow plants at school. Matthew's daughter and son attend the school and he participated

in leading the planning with the PTA which provided the resources for the site materials. Matthew developed the design, program and features in small group workshops with a core parent group, teachers and the principal of the school. Matthew participated and organized the on-site build days to transform this site into an educational and inspiring environment.



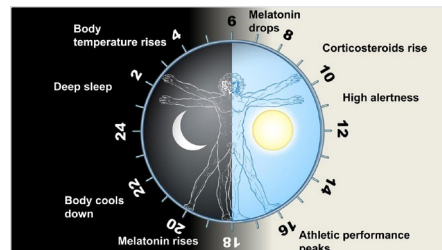
Daylighting + Wellness Research | Salk Institute

San Diego, California | 2014-2018

Hypothesis: improving indoor light will likely enhance human performance and well-being.

In collaboration with the Salk Institute researchers Dr. Panda and Frederick Marks, Matthew engaged in a collaborative research initiative to analyze the benefits of daylighting and natural ventilation. This study would measure the qualitative and quantitative benefits of how people responded to new passive design environments with enhanced daylighting and natural ventilation. The protocol utilized a watch device which would measure daylight exposure in the built environment and correlate it to the users patterns of sleep, stress levels and wellness. The goals

were to be pioneers on analyzing buildings from the well-being perspective, measure the end user performance and to facilitate decision making an change management processes on future projects. This research was developed on the Pacific Center Campus, Palomar College M+O and BNIM San Diego studio.



Pacific Beach Eco District

San Diego, California | 2013-2014

The Pacific Beach EcoDistrict was developed through a series of community workshops co-hosted by the AIA COTE committee and the San Diego Green Building Council.

Matthew while serving on the board of the SDGBC provided leadership throughout the collaborative planning process in organizing workshops, developing programming and providing thought leadership at every step in the process.

Matthew lives in Pacific Beach with his family and is passionate about promoting sustainability in our communities. The Pacific Beach EcoDistrict is a community committed to advancing sustainability by targeting eight performance areas: community identity, health and well-being, habitat and ecosystem, access and mobility, appropriate development, energy, water, and materials management.



Art Cross Walks | Pacific Beach Middle School

San Diego, California | 2014-2015

The Eco Districts identified key community aspects to enhance the pedestrian experience. Matthew provided leadership and guidance with his studio as a pro-bono partner with a community volunteer effort which engaged with an artist for a large scale

mural across two intersections at PB Middle School. This required permits, street closures and planning with the artist in coordinating the volunteer effort which he participated in with his family.



2.1 Accomplishments - Lectures, Panels and Award Juries



National / Regional Presentations

- NOV 2024 Athletic Business Conference**
Building Community Connections: A Presentation on the Multi-Generational Recreation Center New Orleans, LA
- NOV 2019 CCFC Annual Conference**
Progressive Design Build Utilizing Passive Design to achieve Zero Net Energy for Community Colleges. Sacramento, CA
- AUG 2019 California Higher Education Sustainability Conference**
Utilizing Passive Design to achieve Zero Net Energy for Community Colleges. Santa Barbara, CA
- MAY 2018 DBIA Pacific Regional Conference**
Design Build Net Zero for Community Colleges San Diego, CA
- APRIL 2017 Realcom - National Conference**
The Future Office is Experimental, Panel San Diego, CA
- JULY 2017 SCUP - National Conference**
Passive Design: Reallocating Confined Budgets towards an active, sustainable campus. Washington, DC
- OCT 2017 ASSHE Conference & Expo**
Palomar College - Zero Net Energy and design for living building challenge petal certification. San Antonio, TX
- JUNE 2016 USC XED**
High Performance Design. Los Angeles, CA
- APRIL 2016 Design Colloquium Conference**
New Developments in Design Thinking, Recruitment, Retention and Communication. San Francisco, CA
- JAN 2015 Getting to Zero Conference**
Creating ZNE Buildings - Perspectives on Design Process for High Performance Results, Panel. Washington, DC


- JUNE 2015 Miramoto International Great Mids lecture Series.**
Integrated high performance design excellence. Los Angeles, CA
- FEB 2013 ULI - Pacific Regional Conference**
The Power of Zero. Los Angeles, CA
- APRIL 2013 Annual Municipal Green Building Conference**
Going Beyond: Adventures in NZE and LBC at the Building & Community Scale. Los Angeles CA
- NOV 2013 AIA Los Angeles - Educational Workshop**
Living Building Collaborative - presentation. Los Angeles, CA
- JUNE 2013 AIA Arizona - Design Conference**
The 2030 Challenge®: Pulling it Together – Achieving 2030 Goals on the Project and at the Office. Phoenix, AZ
- OCT 2013 Design Colloquium Conference**
Alliances strategies for a Design First Firm. San Francisco, CA
- FEB 2013 AIA San Francisco - Educational Workshop**
Next Gen of Net-Zero. San Francisco, CA

Local Presentations / Educational Workshops

- OCT 2023 San Diego Housing Federation Conference**
Developing Permanent Supportive Housing using Modular Construction. San Diego, CA
- OCT 2022 San Diego Green Building Council - Annual Conference**
Elevating the Human Experience with Biophilic Design Utilizing Modular Construction. San Diego, CA
- SEPT 2021 AIA San Diego - Industry Mixer Presentation**
Sustainability Matters - a thought with climate action pros. San Diego, CA`

2.1 Accomplishments - Lectures, Panels and Award Juries

Local Presentations / Educational Workshops

NOV 2019  **AIA San Diego / Palomar - Workshop + Tour**
Utilizing Progressive Design Build to Elevate Project Goals and Value in Achieving ZNE. San Marcos, CA


NOV 2019 **San Diego Green Building Council - Educational Workshop Series**
ZNE in Action. San Diego, CA

MAR 2019 **San Diego Architectural Foundation Open House San Diego**
Makers Quarter Block D project featured in San Diego Architecture Tour. San Diego, CA

MAY 2018 **San Diego Green Building Council Annual Conference**
AIA COTE Top Ten Measures - Pacific Center Campus sustainable design excellence. San Diego, CA

MAY 2018 **San Diego Green Building Council Annual Conference**
Workplace Wellness. San Diego, CA

DEC 2018 **San Diego Green Building Council - Educational Workshop Series**
Workplace Wellness. San Diego, CA

NOV 2018  **AIA San Diego - Educational Workshop**
Demystifying the Design Award Process San Diego, CA

SEPT 2018 **SDGBC - ZNE Conference**
Panel discussion on design strategies to achieve ZNE. San Diego, CA

NOV 2017 **ULI San Diego - Tijuana Young Leaders, presentation and building tour**
Panel discussion on design strategies to achieve ZNE. San Diego, CA

JULY 2017 **San Diego Green Building Council - Educational Workshop Series**
Sustainability Matters - a thought with climate action pros. San Diego, CA

MAY 2017 **San Diego Green Building Council Annual Conference**
Makers Quarter Block D: Building Positive on Urban Master Plan, San Diego, CA

JUNE 2016 **San Diego Green Building Council Annual Conference**
LEED and the Culture of the New Workplace, San Diego, CA


MAY 2015 **UC San Diego Extended Studies**
Finding career success in green building and design. San Diego, CA

AUG 2015 **San Diego Green Building Council Annual Conference**
Is Net Zero Water Possible? Living Building Challenge Case studies, San Diego, CA

OCT 2014 **ACI San Diego**
Pacific Center Campus development - concrete design, presentation and tour, San Diego, CA

AUG 2013 **Downtown Partnership - Sustainability Committee**
Integrating green roofs to increase public space, San Diego, CA

SEPT 2013 **New School of Architecture**
Lecture: Building Steven Holl's Nelson-Atkins Museum of Art - Bloch Building, Design and technical execution to achieve Design Excellence. San Diego CA

FEB 2012  **AIA San Diego - COTE Committee Workshop**
High Performance Design / Passive Design Approach, San Diego, CA

MAY 2011 **SD BuildingSMART Alliance**
Sustainable communities. San Diego, CA

NOV 2011 **Bright Green Future Conference**
Transforming practice through design. San Diego, CA


NOV 2011 **California Center for Sustainable Energy - Education Workshop**
Integrated High Performance Design - Pathway Beyond Platinum, San Diego, CA


JUNE 2011 **San Diego Green Building Council - Educational Workshop Series**
Redefining Design - DPR Zero Net Energy Case Study, San Diego, CA


APRIL 2011 **Alliant University Leadership Conference**
Regenerative design & development. San Diego, CA

Awards - Design Award Jury Experience

2022 **Gold Nugget Awards Jury Member**
National & International Award program.

2019  **AIA Los Angeles Jury Member**
COTE & COTE NEXT Design Awards

2019-2020  **AIA California**
Design Awards Committee Member

2017  **AIA Arizona Jury Member**
Arizona Gold Medal

Student Design Review Critiques

2024 **CalPoly Pomona**
3rd Student Housing Studio final projects

2018-2023 **CalPoly San Luis Obispo**
Multiple studio engagement

2016-2019 **New School of Architecture**
Multiple studio engagement

2012-2018 **Kansas State University - AP Design**
Multiple studio engagement

2012 **Portland State University**
MindMixer - student award jury member

2.2 Accomplishments - Awards, Honors, and Recognition

National / International

The Chicago Athenaeum: Museum of Architecture & Design & The European Centre for Architecture Art Palomar College Maintenance + Operations

Green Good Award, 2020

Makers Quarter Block D

Green Good Award, 2019

Pacific Center Campus Research + Development

American Architecture Award, 2018

Pacific Center Campus Research + Development

Green Good Award, 2017

Pacific Center Campus Amenities

American Architecture Award, 2017

Arch Daily

Makers Quarter Block D

Building of the Year Nominee, 2021

AIA DBIA National Award

Palomar College Maintenance + Operations

Educational Facilities Merit Award, 2019

Architect Magazine Architect 50

BNIM with contributions of Matthew's leadership

Ranked #1 Sustainability, #2 Design, #2 Overall, 2019

ENR National

Palomar College Maintenance + Operations

Best of the Best, Sustainability Award, 2018

International Interior Design Association (IIDA)

Pacific Center Campus Research + Development

Gold Mid-America Design Awards, Corporate-Large, 2017

Architizer A+ Awards

Pacific Center Campus

Special Mention Award

AIA National Firm Award

BNIM 2011

Local / Regional

AIA AIA California Council

LPA Design Studios

AIA Firm Award, 2021

Pacific Center Campus Research + Development

Excellence in Architecture Merit Award, 2018

Pacific Center Campus Amenities

Excellence in Architecture Merit Award, 2017

AIA AIA San Diego

Ivy Senior Permanent Supportive Apartments

Excellence in Architecture Honor Award, 2023

Keeler Court Affordable Housing

Excellence in Architecture Merit Award, 2022

Palomar College Maintenance + Operations

Excellence in Architecture Merit Award, 2019

Makers Quarter Block D

Excellence in Architecture Citation Award, 2018

Pacific Center Campus Amenities

Excellence in Architecture Honor Award, 2017

Pacific Center Campus Research + Development

Excellence in Architecture Honor Award, 2016

AIA AIA Orange County

City of Tracy, Multi-Generational Recreation Center

Excellence in Architecture Merit Award, 2023

Tribute Building

Excellence in Architecture Merit Award, 2022

Bethel AME Affordable Housing

Framework for Design Excellence, Design for Equitable Communities, 2022

El Cerrito Permanent Supportive Apartments

Excellence in Architecture Honor Award, 2021

Normandie Permanent Supportive Housing

Excellence in Architecture Honor Award, 2020

AIA AIA Kansas City

Ivy Senior Permanent Supportive Apartments

Excellence in Architecture Merit Award, 2022

Palomar College Maintenance + Operations

Excellence in Architecture Honor Award, 2019

Makers Quarter Block D

Excellence in Architecture Merit Award, 2018

Pacific Center Campus Amenities

Excellence in Architecture Merit Award, 2017

Pacific Center Campus Research + Development

Excellence in Architecture Merit Award, 2016

AIA AIA Kansas City

Palomar College Maintenance + Operations

Excellence in Architecture Merit Award, 2019

Makers Quarter Block D

Excellence in Architecture Honor Award, 2018

Pacific Center Campus Amenities

Excellence in Architecture Merit Award, 2017

Pacific Center Campus Research + Development

Excellence in Architecture Merit Award, 2016

AIA AIA Iowa

Makers Quarter Block D

Excellence in Architecture Merit Award, 2018

Pacific Center Campus Amenities

Excellence in Architecture Honor Award, 2017

Pacific Center Campus Research + Development

Excellence in Architecture Merit Award, 2016

AIA AIA Central States

Makers Quarter Block D

Excellence in Architecture Citation Award, 2018

Pacific Center Campus Amenities

Excellence in Architecture Merit Award, 2016

San Diego Architecture Foundation, Orchids + Onions

Makers Quarter Block D

Orchid Award Architecture, 2019

Palomar College Maintenance + Operations

Malone Grand Orchid Award Architecture, 2019

Pacific Center Campus Research + Development

Orchid Award Landscape, 2016

Pacific Center Campus Amenities

People Choice Orchid Award Architecture, 2015

ENR California

Palomar College Maintenance + Operations

Best Project, Southern California, Sustainability, 2018

Pacific Center Campus Research + Development

Best Project, Southern California, office/Mixed Use, 2016

San Diego Green Building Council

El Cerrito Permanent Supportive Apartments

Sustainable Marvel Award, 2024

Makers Quarter Block D

Sustainability Award, 2019

Palomar College Maintenance + Operations

Living Building Challenge Category Merit Award, 2019

California Higher Education Sustainability Conference

Palomar College Maintenance + Operations

California Community College Overall Sustainable Design Award, 2019

San Diego Housing Federation

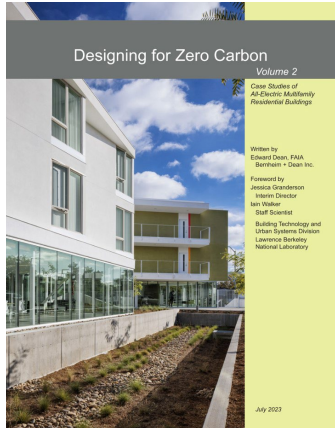
Keeler Court Affordable Housing

Project of the Year, Ruby Award, 2022

Ivy Senior Permanent Supportive Apartments

Project of the Year Nominee, 2022

2.2 Accomplishments - Publications



Publications Authored by Nominee

Newton Affordable Housing
Building Design + Construction: Matthew Porreca (July 2022)
"Rising costs push developers to consider modular construction."

High Performance Housing
Catalyst Magazine: Matthew Porreca (March 2023)
"Housing as the gateway to campus life"

Catalyst Magazine: Matthew Porreca (April 2022)
"The Power of Contextual Housing Development"

Catalyst Magazine: Matthew Porreca (April 2020)
"Creating Transformative Mixed-Use Infill Developments"

Publications Featuring Nominee

Makers Quarter Block D
Architectural Record: Michael Cockram (April 2019)
"AIA Continuing Education: High Performance Facades"

Metropolis Magazine: Joseph P. Sgambati III (May 2019)
"Sliding Shades and Natural Ventilation Help This San Diego Office Aim for LEED Platinum."

San Diego Business Journal: Ray Huard (April 2019)
"College Construction Is Lesson in Sustainability."

Globe Street: Carrie Rossenfeld (June 2017)
"Giving Makers Quarter's Block D a 'Personality'"

Normandie Permanent Supportive Housing
Building Design + Construction: LPA (February 2021)
"The power of contextual housing development, creating urban villages and vibrant communities starts with a better understanding of place."

Catalyst Magazine: LPA (November 2020)
"Assembly Required."

Palomar College Maintenance + Operations
Metropolis Magazine: Audrey Gray (July 2019)
"Facing a Limited Budget, This Community College Still Built a Net-Zero Facility."

San Diego Business Journal: Ray Huard (August 2018)
"A New Model for Affordable Housing."

El Cerrito Permanent Supportive Housing
Catalyst Magazine: LPA (October 2020)
"The Time is Right for P3s in Healthcare"

Newton Affordable Housing
Catalyst Magazine: LPA (August 2022)
"Answering the EPIC Challenge."

UC San Diego York Hall Renovation
Catalyst Magazine: LPA (January 2024)
"Inside an Integrated Design"

Publications Featuring Nominee's Projects

Bethel AME Affordable Housing
San Diego Union Tribune: Harvey L. Vaughn (January 2024)
"Our congregation is proud to be the first to embrace 'yes in God's back yard' housing plan."

Fast Company: Adele Peters (October 2023)
"The hidden place that cities could build more housing"

Axios San Diego: Andrew Keatts (November 2023)
"YIGBY Movement expects big 2024"

Catalyst Magazine: LPA (November 2022)
"Net Zero Energy Supportive Housing"

UC San Diego York Hall Renovation
Structure Magazine: Bryan Seamer (July 2024)
"Shipshape: The Seismic Rehabilitation of York Hall"
San Diego Business Journal: Ray Huard (August 2023)
"\$35m project protects UCSD Centerpiece from earthquakes"
Catalyst Magazine: LPA (July 2023)
"Doing More with Less. A Targeted Seismic Approach"

Pacific Center Campus Amenities
Iowa Architect Magazine: (Winter 2018)
"Award Issue"
San Diego Union Tribune: Roger Showley (October 2016)
"Qualcomm, Photo museum, Segal win design awards."
ENR California: (September 2016)
"Pacific Center Campus"

Ivy Senior Permanent Supportive Apartments
Designing for Zero Carbon Volume 2, Case Studies of All-Electric Multifamily Residential Buildings: Edward Dean (July 2023)
Book Publication, this book provides a detailed case study of the systems, design approach and analyzes performance metrics on this project.
Affordable Housing Finance Magazine: Symore Strong (June 2022)
"Affordable Housing Projects Honored at the 2022 Gold Nugget Awards"

2.2 Accomplishments - Publications

Publications Featuring Nominee's Projects

Makers Quarter Block D

Designing for Zero Carbon Volume 1, Case Studies of All-Electric Buildings. Edward Dean (July 2023)

Book Publication, This book provides a detailed case study of the systems, design approach and analyzes performance metrics on this project.

ArchDaily (April 2020)

"Makers Quarter Block D Office Building"

Architectural Record. Joann Gonchar (November 2020)

"Profession Must Zero in on Carbon to Meet 2030 Climate Goals"

AIA Architectural Record. Barbara Horwitz-Bennett (October 2020)

"Mitigating Glare and Solar heat Gain with Exterior Shading Systems." AIA Continuing Education."

San Diego Union Tribune. Philip Molnar (October 2019)

"Here is San Diego's Best and Worst Architecture"

Iowa Architect Magazine. Chelsea Evers (March 2019)

"Movers & Makers, How this firm is revitalizing San Diego's East Village."

Architect Magazine (June 2019)

Makers Quarter Block D

AIA The Architect's Newspaper (April 2018)

"Continuing Education: High performance Facades"

San Diego Business Journal. Ray Huard (November 2019)

"East Village's Block D Earns Platinum From Green Building Council."

Architizer (April 2019)

Makers Quarter Block D

Net Zero Building's Magazine (May 2018)

"Net Zero Buildings on the Rise"

San Diego Union Tribune. Jennifer Van Grove (September 2018)

"Inside Block D: Downtown's distinctive new office development."

San Diego Union Tribune. Roger Showley (May 2017)

"Makers Quarter: Sunshaded offices, hipster hangouts."

Palomar College Maintenance + Operations

San Diego Union Tribune. Philip Molnar (October 2019)

"Here is San Diego's Best and Worst Architecture" Orchid Awards

Palomar News (August 2019)

"Daylight and fresh air: Leading the way in energy efficiency"

ENR California (October 2018)

ENR California Best Projects 2018 Green Project: Palomar College Maintenance and Operations Building

ENR National Alisa Zevin (March 2019)

"Best Green Project: Palomar College Maintenance and Operations Building"

Keeler Court Affordable Housing

The Architects Newspaper. Chris Walton (February 2023)

"Keeler Court Apartments is an affordable-housing complex with an emphasis on outdoor community space"

El Cerrito Permanent Supportive Housing

San Diego Union Tribune. Gary Warth (August 2023)

"Shipping Containers to house homeless people in San Diego neighborhood"

Catalyst Magazine. LPA (January 2024)

"Finding Value in Modular"

Catalyst Magazine. LPA (October 2023)

"LPA Sets New Benchmark for High-Performance Design"

Catalyst Magazine. Muhsin Lihony (November 2020)

"The Time is Right for P3s in Healthcare"

Family Health Center of San Diego - Integrated Medicine + Wellness

Catalyst Magazine. LPA (April 2024)

"A Net-Zero Health Center for Underserved Communities"

Catalyst Magazine. LPA (April 2022)

"New Center will support Community Health and Wellness"

Morongo Health Center

Catalyst Magazine. LPA (April 2024)

"The Future of Tribal Healthcare"

City of Tracy Multi-Generational Recreation Center

Catalyst Magazine. LPA (January 2024)

"Carbon Positive Landscape"

Catalyst Magazine. LPA (October 2023)

"LPA Sets New Benchmark for High-Performance Design"

Catalyst Magazine. LPA (July 2023)

"A Net Zero, Multigenerational Recreation Center"

SuperBlock

San Diego Business Journal. Ray Huard (December 2018)

"Character is Amenity for East Village Office"

San Diego Union Tribune (November 2018)

"'SuperBlock' project eye tech giant for east village campus"

Rivo Holdings

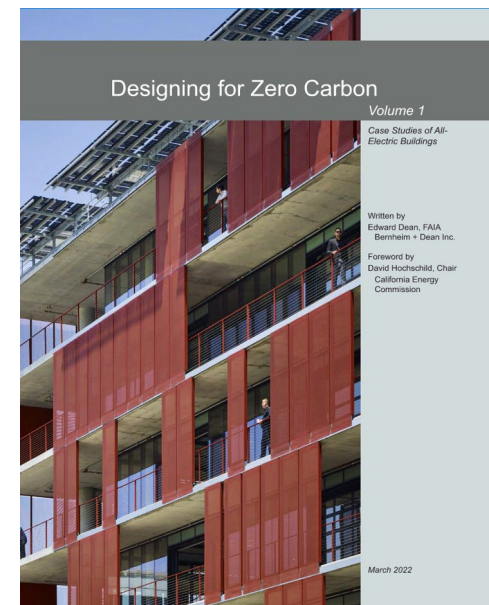
San Diego Business Journal. Jessica King (July 2017)

"Cool Offices"

Normandie Permanent Supportive Housing

Urbanize LA. Steven Sharp (January 2023)

"Modular affordable housing moves forward at 1228 S Normandie Avenue A mix of affordable and supportive units in Pico-Union"



3: EXHIBITS



3.0 Exhibits List



1. **Research + Development Building**
Pacific Center Campus
San Diego, CA
2014



2. **Block D Makers Quarter**
San Diego, CA
2018



3. **Amenities Building**
Pacific Center Campus
San Diego, CA
2015



4. **Maintenance + Operations Building**
Palomar College
San Marcos, CA
2018



5. **Keeler Court Affordable**
Housing Development
San Diego, CA
2021



6. **El Cerrito Permanent Supportive**
Housing Family Health Center of
San Diego
San Diego, CA
2024



7. **'Everyone Deserves High Performance**
Housing' Innovations in Affordable Housing
Design Approach
Current

3.0 Exhibits

1: Pacific Center Campus Research + Development Building

San Diego, California | 2014

The design approach which was led by Matthew for the Research and Development Building was driven by transforming this site from a vehicular dominated site to a pedestrian oriented campus environment which extends the native canyon ecology onto this site. The building massing is organized around shaping a dynamic pedestrian courtyard space optimizes passive design strategies to achieve high-performance results while enhancing the interior environments for innovation and productivity. The building's east/west solar orientation and narrow floor plates promote natural ventilation and daylighting, and a high-performance façade design controls heat gain and glare. Thermal mass was utilized with its exposed concrete moment frame to provide thermal comfort, control vibration for research spaces and provide future flexibility.

The design results in a highly collaborative research environment to foster innovation and discovery, and attract the top 2% of engineering talent. This is the largest building in southern California to utilize natural ventilation.

Framework for Design Excellence:

Performance

Facade design to optimize daylighting while controlling solar heat gain.

Wellness

Natural Ventilation, enhanced daylighting and active building design approach.

Community

Scale of spaces - from courtyard, to elevated balconies, to the vertical circulation systems organized around social spaces.

Experience

Pedestrian spaces are designed around access to light, scales of space and porosity of the site integrated with nature.

Matthew Porreca AIA

Design Firm
BNIM

Role of Nominee
Design Principal

AIA Awards

2018 AIA California Council Merit Award Excellence in Architecture

2016 AIA San Diego Honor Award Excellence in Architecture

2016 AIA Kansas City Merit Award - Architecture

2016 AIA Kansas Merit Award - Architecture

2016 AIA Iowa Merit Award - Architecture

Additional Awards and Certifications

2018 Chicago Athenaeum American Architecture Award

2017 The European Centre for Architecture Art Design and Urban Studies and The Chicago Athenaeum: Museum of Architecture and Design Green GOOD DESIGN®

2017 Architizer A+Awards Special Mention, Office-Mid rise category

2016 San Diego Architectural Foundation - Orchid Award

LEED Gold Certification

Energy Star - 98 Rating

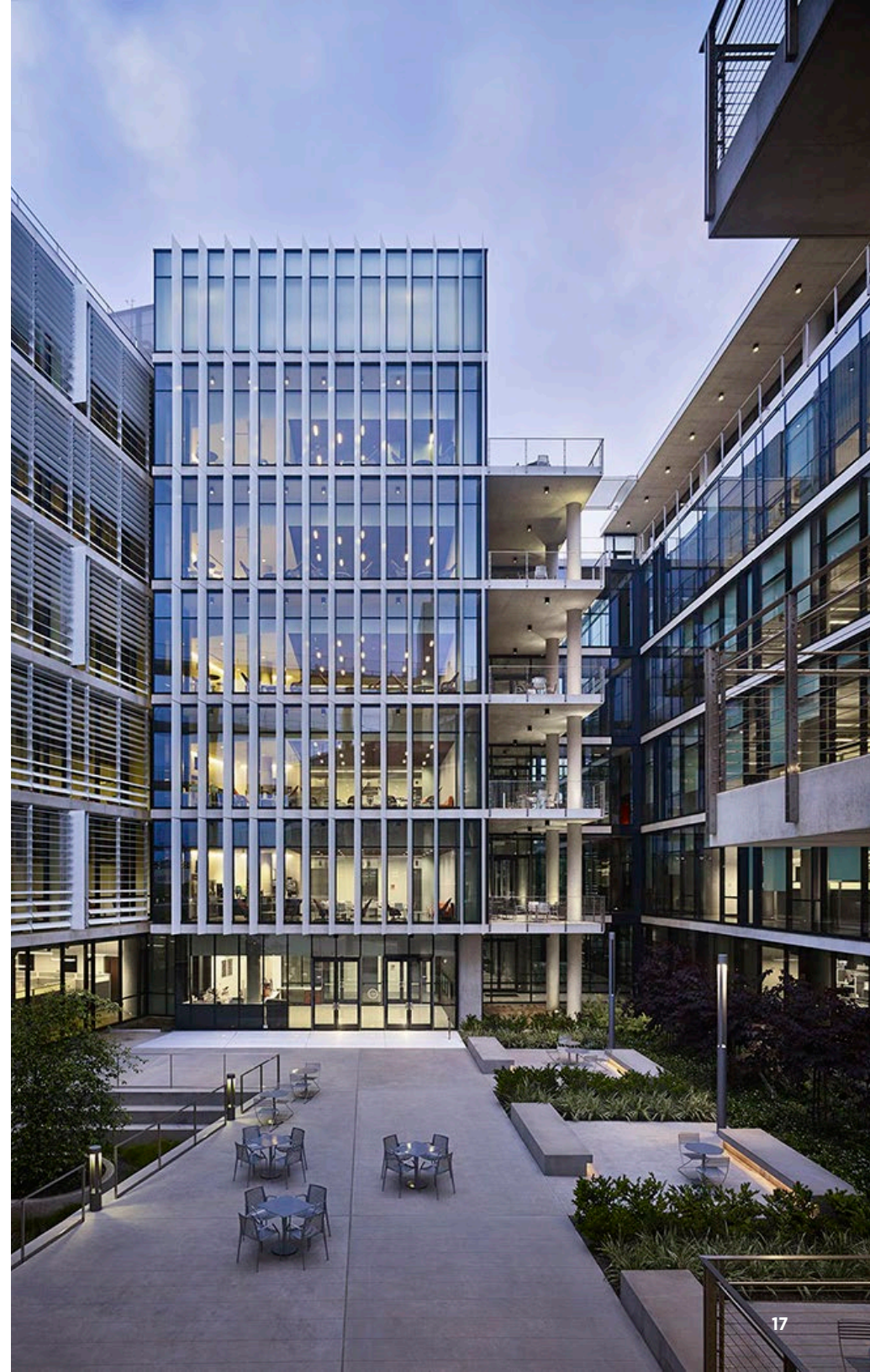
Publications

Iowa Architect Magazine, Winter 2018

Declaration of Responsibility:

I have personal knowledge of the nominee's responsibility for this project, in which he was largely responsible for design.

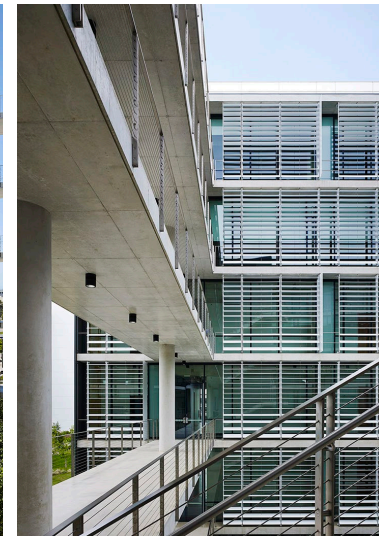
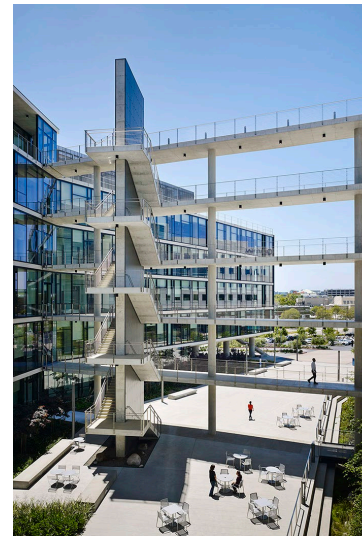
Rod Kruse, FAIA | BNIM, Principal

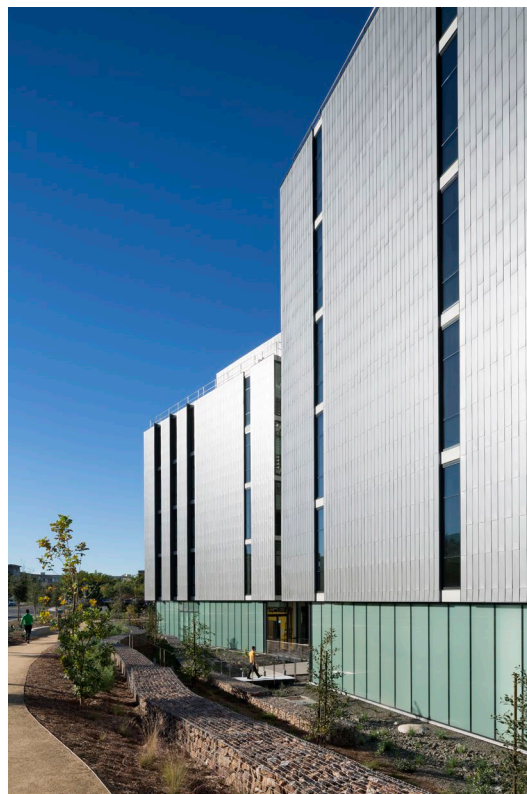




“When we were discussing this project, one of the things that really struck was the deliberate, beautiful, elegant way that the designers worked to connect people, but to also connect to the natural setting. Not only in terms of the massing of the project, down to the details, the view, the light, how buildings related to each other and created the courtyard as the centerpiece of all that.”

AIA Kansas City Jury Comments, 2016





100%

Natural ventilation
- office space

84%

Daylight occupied
space

81%

Reduction potable
water site

3.0 Exhibits

2: Makers Quarter Block D

San Diego, California | 2018

Matthew's design approach was to embrace the urban site constraints and to develop passive design strategies which embraces human centered design. Utilizing an offset core allowed the floorplate to integrate passive natural ventilation by capturing predominately western breezes and cross ventilating each of the floors. This also allowed the design to utilize exterior circulation along most of the west façade which created a deep overhang providing shading on the western exposure. The open circulation system also offered an opportunity to create collaboration decks on each level to promote community among the tenants while also creating a unique identity which conceptually provides an elevated public realm at each floor which interacts with the street below to connect the users with the community.

The façade design utilized two active façade systems to protect the areas of glazing from solar heat gain. The perforated metal panels along the walkways are manually operated by the users to engage with the building and control their individual environments. The motored exterior shades on the south and west facades reduced mechanical systems loads and interior glare. The design results in the first LEED Platinum and Zero Net Energy office building in downtown San Diego with the opportunity to redefine the future of workplace and provide a pilot project to influence the regional commercial office market.

Framework for Design Excellence:

Performance

Facade design to optimize daylighting while controlling solar heat gain.

Wellness

Natural Ventilation, enhanced daylighting and active building design approach.

Community

Scale of spaces - from courtyard, to elevated balconies, to the vertical circulation systems organized around social spaces.

Experience

Pedestrian spaces are designed around access to light, scales of space and porosity of the site integrated with nature.

Matthew Porreca AIA

Design Firm

BNIM

Role of Nominee

Design Principal

AIA Awards

2018 AIA San Diego
Citation Award Excellence in
Architecture

2018 AIA Kansas City
Merit Award - Architecture

2018 AIA Kansas
Honor Award - Architecture

2018 AIA Iowa
Merit Award - Architecture

2018 AIA Central States - Citation
Award - Architecture

Additional Awards and Certifications

2019 The European Centre for
Architecture Art Design and
Urban Studies and The Chicago
Athenaeum: Museum of
Architecture and Design
Green GOOD DESIGN®

2019 San Diego Architectural
Foundation - Orchid Award
Architecture

LEED Platinum Certification

2021 Arch Daily - Building of the
Year Nominee

Publications

Metropolis Magazine - Sliding
Shades and Natural Ventilation
Help This San Diego Office Aim
for LEED Platinum, May 2019

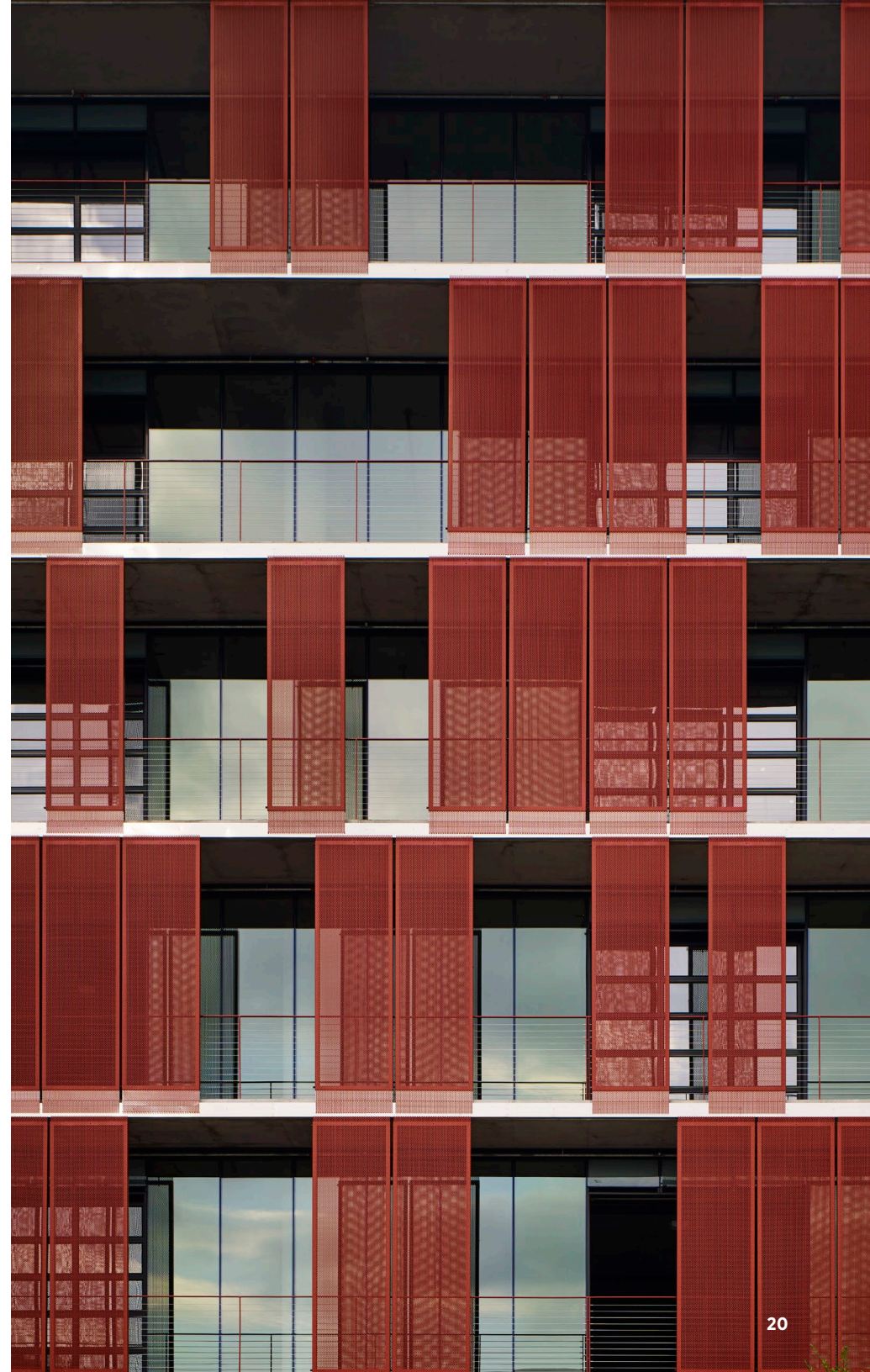
Architectural Record - Profession
must zero in on carbon to meet
2030 climate goals, Nov 2020

Architectural Record - High-
Performance Facades, April 2019

Declaration of Responsibility:

I have personal knowledge of the
nominee's responsibility for this
project, in which he was largely
responsible for design.

Rod Kruse, FAIA | BNIM, Principal



“We’ve been most impressed with their genuine excellence and holistic approach to sustainability and urban density as it relates to the design of the office space within Makers Quarter. By intertwining public realm and open space, they’ve helped us to create an environment that appeals most competitively to prospective tenants and our ethos of future workplace.”

Stacey Pennington, Makers Quarter Client, Principal/Founder of SLP Urban Planning





Matthew Porreca AIA

100%

All electric
building

ZNE

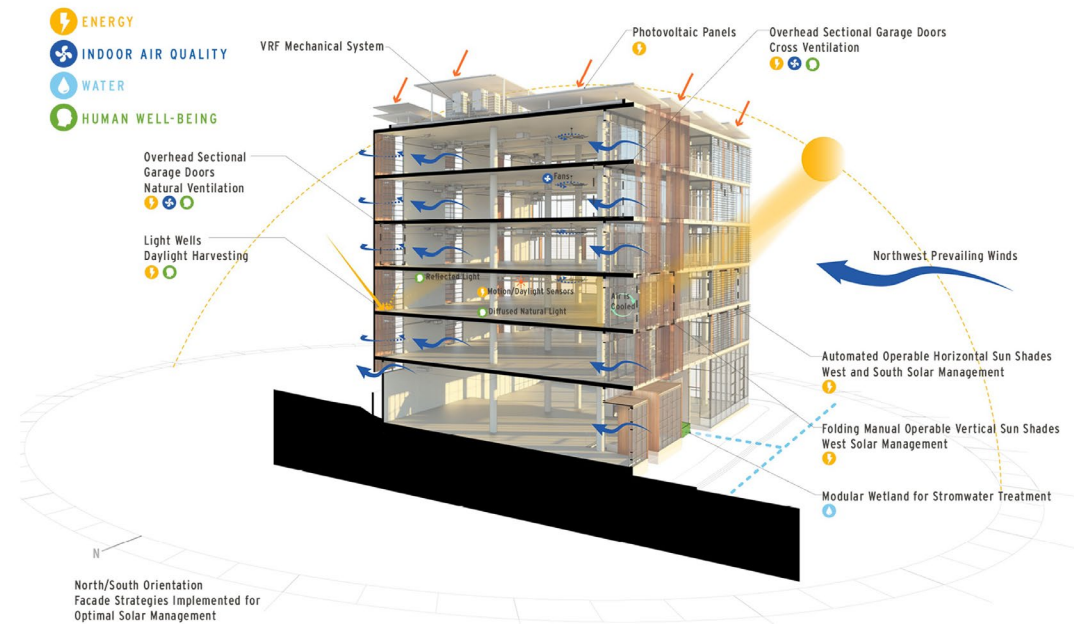
Roof mounted
PV

72%

Below
baseline EUI

97%

Views to
outdoors



3.0 Exhibits

3: Pacific Center Campus Amenities Building San Diego, California | 2015

Matthew led this innovative design which is woven into the landscape to provide inspiring environments to promote social interactions, learning and offer a retreat to rejuvenate. The massing wraps around a central courtyard space and then extends the native landscape up a sloped green roof deck to the upper level weaving the landscape vertically to provide a diversity of exterior spaces. The parti diagram is organized as an elongated east-west orientation which allows the facade design with its horizontal sunshade to minimize solar heat gain while limited glazing on the east and west elevations.

The conference facility provides meeting and learning spaces that are highly flexible while presenting new models for collaborative learning environments. The great hall within the dining space is a transparent pavilion with direct connections to outdoor dining terraces, overlooking the sports field and entry courtyard. The Center for the Future of Health operated by Stanford University Health is designed to inspire the next generation of health centers, embodying the true spirit of innovation while fully integrating technology into the user experience.

The design results in creating a vibrant program with highly activated diverse exterior garden spaces to be the central community hub and fully transform this campus into an inspiring research campus with an engaging public realm.

Framework for Design Excellence:

Performance

Facade design to optimize daylighting while controlling solar heat gain.

Wellness

Natural Ventilation, enhanced daylighting, site integrates a 1/4 acre organic orchard and garden.

Community

Scale of spaces focus on activation with the central courtyard, elevated event roof deck, soccer field dining terrace to the open circulation system.

Experience

Building organized around porosity to weave into the site and connecting to nature with its expansive sloped green roof.

Matthew Porreca AIA

Design Firm
BNIM

Role of Nominee
Design Principal

AIA Awards

2017 AIA California Council - Merit Award

2017 AIA San Diego Honor Award Excellence in Architecture

2017 AIA Kansas City Merit Award - Architecture

2017 AIA Kansas Merit Award - Architecture

2017 AIA Iowa Honor Award - Architecture

2016 AIA Central States - Merit Award - Architecture

Additional Awards and Certifications

2017 Chicago Athenaeum American Architecture Award

2019 The European Centre for Architecture Art Design and Urban Studies and The Chicago Athenaeum: Museum of Architecture and Design Green GOOD DESIGN®

2015 San Diego Architectural Foundation - Orchid Award Architecture, People's Choice


LEED Gold Certification

Declaration of Responsibility:

I have personal knowledge of the nominee's responsibility for this project, in which he was largely responsible for design.

Rod Kruse, FAIA | BNIM, Principal





"[The Amenities Building is] masterful in doing what some of the best architecture does by integrating with the landscape and defining great exterior space."

AIA Iowa Jury Comments, 2017

"[The Amenities Building] succeeds in creating a porous yet well-defined space on the campus, appropriate to its shared amenities purpose. [Its] strong plan holds the circulation and outdoor deck to the perimeter, activating the court at ground level and above. [It] encourages and supports the indoor-outdoor lifestyle of the San Diego climate."

AIA Central States Jury Comments, 2016

100%

Natural ventilation -
dining, conference,
physical therapy

95%

Daylight + views
occupied space

81%

Reduction potable
water site



3.0 Exhibits

4: Maintenance + Operations Building Palomar College

San Marcos, California | 2018

Matthew led the innovative design which prioritized passive design approaches to reallocate the costs associated with mechanical infrastructure to the enhanced façade design. A unique passive design system was utilized to embrace the inland southern California climate, and a narrow building footprint provides year-round optimal temperatures throughout the building. Innovative design strategies, such as thermal chimneys and roof monitors, create increased natural ventilation, lower building energy consumption, and decrease mechanical infrastructure. Other sustainable strategies, such as a rainwater harvesting grey water system, renewable energy, and daylight harvesting, exposed thermal mass for night purging, were incorporated to provide the user with a “long life, loose fit” building. The design challenges the typical maintenance and operations building typology by creating a positive, high performance campus environment that centers on human purposed design.

The design results in a Net Zero Energy all electric building, designed to achieve LEED Platinum certification and to become the first Living Building Petal certified community college building in the world. It's become an active demonstration of the affordability of sustainable design at Palomar College.

Framework for Design Excellence:

Performance

Passive design utilizing thermal chimneys to eliminate 66% of the HVAC requirements. NZE - all electric building.

Wellness

Natural Ventilation, enhanced daylighting and thermal mass for thermal comfort.

Community

Organized around a central courtyard to bring together all the different departments along with the campus community.

Experience

Extends the campus arboretum through this site as a gateway to campus.

Matthew Porreca AIA

Design Firm
BNIM

Role of Nominee
Design Principal

AIA Awards
2020 AIA Kansas City
Honor Award - Architecture

2019 AIA San Diego
Merit Award Excellence in
Architecture

2019 AIA Kansas
Merit Award - Architecture

**Additional Awards and
Certifications**
2020 The European Centre for
Architecture Art Design and
Urban Studies and The Chicago
Athenaeum: Museum of
Architecture and Design
Green GOOD DESIGN®

2019 San Diego Architectural
Foundation - Grand Malone
Orchid Award Architecture

ENR, National Best of the Best,
Sustainability

DBIA National Award, Merit
Educational Facilities

Publications
Metropolis Magazine - Facing a
Limited Budget, This Community
College Still Built a Net-Zero
Facility, July 2019

Architectural Record - High-
Performance Facades, April
2019

Declaration of Responsibility:
I have personal knowledge of the
nominee's responsibility for this
project, in which he was largely
responsible for design.

Rod Kruse, FAIA | BNIM, Principal





"This new complex is truly state-of-the-art in terms of energy efficiency and sets an example for the way all new buildings should be built."

Dr. Joi Lin Blake, Superintendent / President, Palomar Community College District

"The result has been a noticeable change in staff mood from one of tension and grumpiness to now one of happiness and enthusiasm. For me ... a view of the bio-retention basin with its lush landscaping and the surrounding hills is rejuvenating."

Dennis Astl R.A., CCM, LEED AP, Manager, Construction & Facilities Planning, Palomar Community College



105%

ZNE, On-site power generation

100%

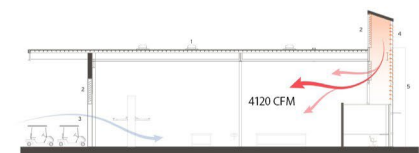
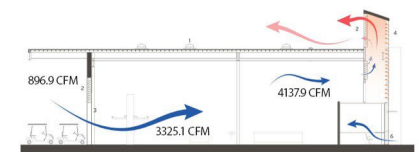
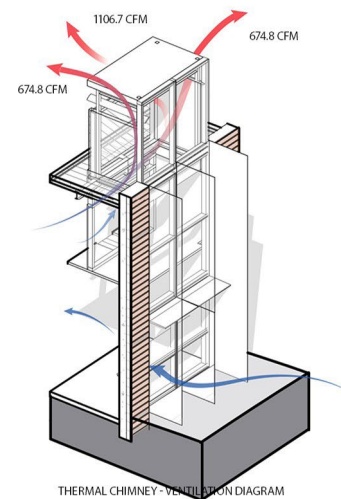
Daylighting

86%

Natural ventilation

66%

Passive design - no HVAC



3.0 Exhibits

5: Keeler Court Apartments Affordable Housing

San Diego, California | 2021

Matthew's design approach embraces the irregular site geometry which is organized into two bars linked with a pedestrian bridge to shape a hub of activity within the community courtyard. The courtyard is positioned to capture prevailing breezes while allowing a porosity of light to animate the courtyard while offering views out to the adjacent park and downtown skyline. The massing was articulated to break down the scale of the massing with its staggered units to thin up the building proportions at the ends relating to the single family house scale in the neighborhood. The facade was articulated with a ribbon of smooth stucco which flows across the elevation and is carved away at the base and the balconies with a rich insertion of rich yellow and orange color. Sustainable strategies leverage the natural airflow and ample daylight provided by its open circulation and balconies. The design is registered to achieve Greenpoint Platinum certification, the highest level of sustainability.

The design results in addressing a great need for housing in San Diego and demonstrate how affordable apartment communities can be beautiful, sustainable, and well-integrated with the surrounding community.

Framework for Design Excellence:

Performance

Passive design utilizing cross ventilation in the units, solar thermal system for 100% of hot water demand and expandable pv system to achieve future ZNE.

Wellness

Natural Ventilation, connecting residents to nature with views from all the units.

Community

Organized around a central courtyard with adjacent resident amenity spaces to promote social engagements.

Experience

Provides residents garden spaces, educational spaces and connects residents to its neighborhood.

Design Firm

BNIM

Role of Nominee

Design Principal

AIA Awards

2019 AIA San Diego
Merit Award Excellence in
Architecture

2020 AIA Kansas City
Honor Award - Architecture

2019 AIA Kansas
Merit Award - Architecture

Additional Awards and Certifications

2022 AIA San Diego
Merit Award Excellence
in Architecture

Additional Awards and
Certifications 2022 Golden
Nugget, Merit Award

2022 San Diego Housing
Federation Ruby Awards,
Project of the Year

Greepoint Platinum Certification

Publications

Fast Company, The hidden place
that cities could build more
housing

Architects Newspaper, Keeler
Court Apartments is an
affordable-housing complex
with an emphasis on outdoor
community space, Feb 2023

Declaration of Responsibility:

I have personal knowledge of the
nominee's responsibility for this
project, in which he was largely
responsible for design.

Rod Kruse, FAIA | BNIM, Principal







100%

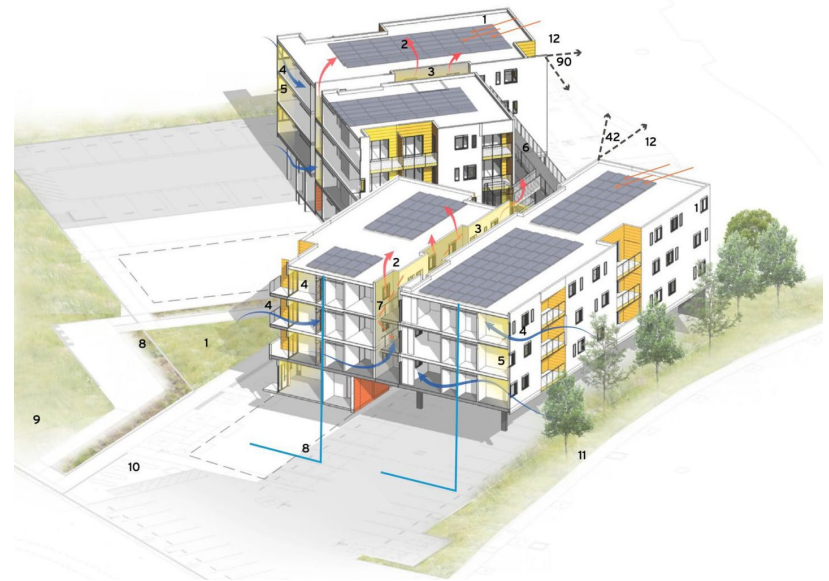
Passive cooling
design

100%

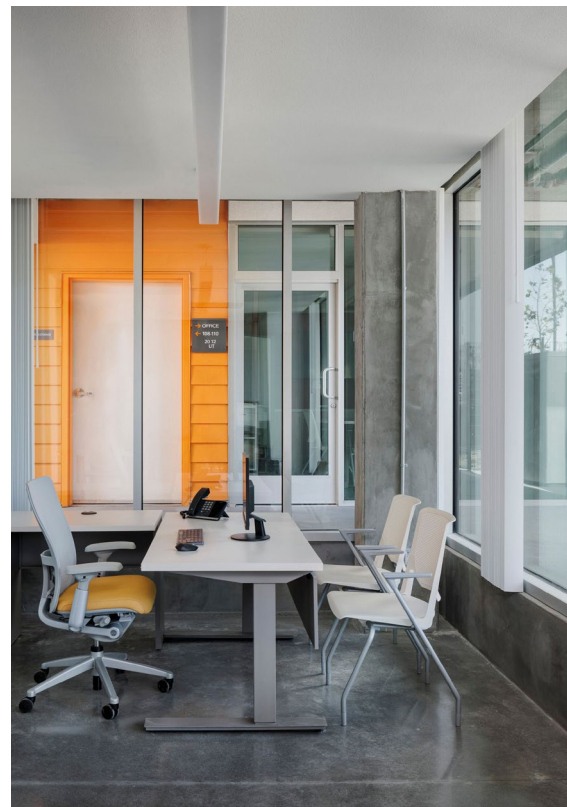
Stormwater
treated on site

ZNE

Ready with additional
roof mounted PV



Matthew Porreca AIA



31

3.0 Exhibits

6: El Cerrito Permanent Supportive Housing Family Health Center of San Diego

San Diego, California | 2024

Matthew's approach to designing this innovative project was to fully embrace the use of single use recycled shipping containers as a rigorous module which will be prefabricated modular units constructed off site. The design is focused around creating vibrant community and social spaces while creating porosity through the site for air, light and views to connect the residents with each other and the surrounding community. The facade design is driven from the container module and then scaled down into smaller modules with the window proportions and vertical sunshades to create a multitude of texture and scale. The design transforms a shipping container into an architectural language which celebrates its original form while humanizing it with its organization and overall façade design. High performance centralized VRF system and centralized electric heat pump boiler system for domestic hot water. The roof area or 5th façade is preserved for photovoltaic panels for energy generation and solar thermal panels for hot water generation. There are multiple roof vegetated roof decks with a community vegetable garden to reduce heat gain and collect storm water. Overall building performance goals are being achieved to exceed 70% below title 24 and 86.6% below the AIA 2030 challenge benchmark. This project is designed as an all-electric development to promote carbon neutrality. The design results in utilizing a modular construction design process innovates at every step of the delivery model from design, documentation, permitting to construction in promoting a lean delivery process.

Framework for Design Excellence:

Performance

All electric centralized systems with solar thermal and pv roof mounted systems.

Wellness

Porosity to promote natural ventilation, views and light penetration to all spaces.

Community

Organized around several courtyards with vertical social spaces on each level and rooftop community garden space.

Experience

Active building design with support services on site.

Matthew Porreca AIA

Design Firm

LPA

Role of Nominee

Principal / Design Director

AIA Awards

2021 AIA Orange County
Honor Award Excellence in
Architecture

Additional Awards and Certifications

2024 San Diego Green Building
Council, Sustainable Marvel
Award

2021 Golden Nugget, Merit
Award - Innovative Housing

Greepoint Platinum Certification

Publications

San Diego Union Tribune -
Shipping Containers to house
homeless people in San Diego
neighborhood

Declaration of Responsibility:

I have personal knowledge of the
nominee's responsibility for this
project, in which he was largely
responsible for design.

Matt Winter, AIA | LPA

Director of Mixed-Use







Matthew Porreca AIA

100%

All electric

87%

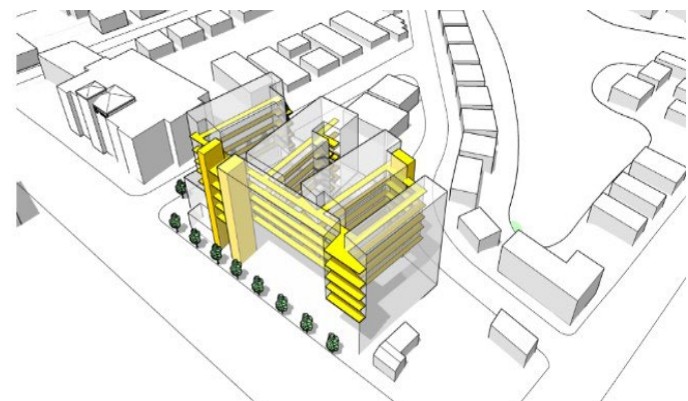
Below AIA 2030

Benchmark

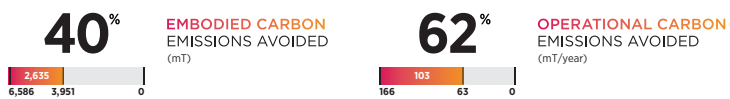
45%

of Energy Use met

by renewables



Carbon Performance



3.0 Exhibits

7: 'Everyone Deserves High Performance Housing' Innovations in Affordable Housing Design Approach Current

Matthew for almost a decade has been redefining what high performance housing should provide through a rigorous design process which is focused on Performance, Wellness, Experience and Community. This has been developed into an elevated baseline approach to designing high performance housing across LPA's mixed use practice. The goals for each project are specific to its site, program, location and client. The goals and vision are defined in a dialogue with clients, informed by research, analysis, and with a social responsibility to elevating communities by building social connections for the residents.



Matthew Porreca AIA

Design Firm
LPA
Role of Nominee
Principal / Design Director

PERFORMANCE

Matthew developed a design process and elevated baseline approach to building systems which is based on electrification, exceeding the AIA 2030 and achieving carbon neutrality for an entire portfolio of mixed use developments.

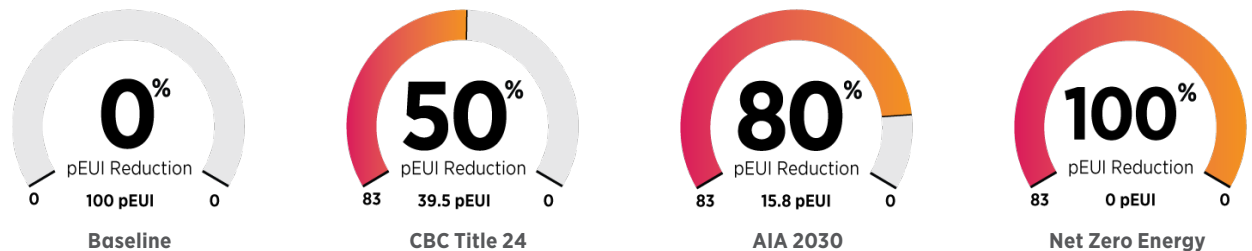
The elevated baseline includes:

- All electric building
- High performance Systems:
 - Centralized VRF - ductless system
 - Centralized electric heat pump water system
- Fifth Facade: an approach to preserve the roof area free of mechanical equipment and just for renewable systems: PV and solar thermal

"A shining example of the impact we can make on the world."

Elizabeth Carmichael
President, SDGBC Board of Directors

ELEVATED BASELINE APPROACH



PROJECTS EXCEEDING AIA 2030 COMMITMENT

- | | |
|------------------------------|---------------------------|
| • Vista South Santa Fe: 100% | • Newton Supportive: 100% |
| • Bethel AME: 100% | • Bay Point Veteran: 100% |
| • 5020 University: 100% | • El Cerrito: 86.6% |



WELLNESS

From Matthew's past research with the Salk Institute seeing the positive effects of daylighting and natural ventilation on human health and wellbeing has had a profound effect in shaping design approaches around passive design strategies first.

The elevated baseline for Passive Design includes:

- Optimized massing – orientation / self shading from overall massing layout.
- Natural ventilation – operable windows
- Enhanced daylighting - Floor to ceiling windows
- Solar heat gain control – facade optimization with sunshades or overhangs
- Active Building design approach: Unconditioned circulation spaces – corridors and stairs

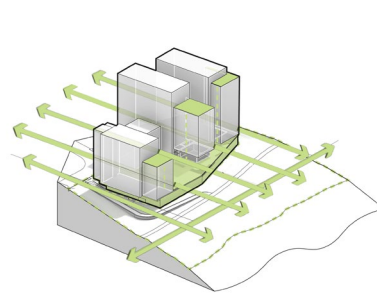
EXPERIENCE

In developing a methodology for experiential design starts with the clarity of a strong parti diagram. Matthew builds on the diagram with a talent for properly scaling building massing with their public spaces, circulation systems, facade language to unify a design approach which is human centered. The experience is driven to provide a diversity of spaces, from their program, connectivity o other spaces with porosity, to access to light and air and how they change throughout the day.

The elevated baseline includes:

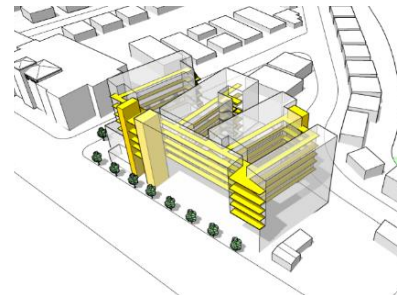
- Active Building Design Approach: Unconditioned circulation spaces – corridors/stairs.
- Biophilic design
- Site:
 - Integrate stormwater treatment and storage into site planters – expose process
 - Promote biodiversity in landscape
 - Connection to Nature - restore natural systems and ecosystem

HOUSING AT SCALE



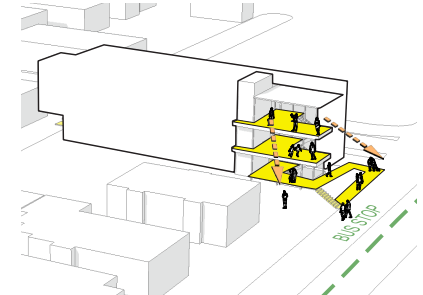
Connection to Nature

Biophilic design principles are integrated throughout the concept design. Opportunities exist to bring nature onto the site and provide vertical sky gardens on elevated roof decks to provide an experiential amenity.



Porosity / Active Building

The massing and circulation system provides view corridors which allows light and air to flow through the site. Stairs are designed to promote use for health and wellness with strategically organized social spaces adjacent to them.



Public Realm

The urban design approach is to vary the scale appropriately to its surrounding neighborhood context. Breaking down scale provides opportunity to provide public spaces along the street for activation along with elevated decks or porches to engage with the community.



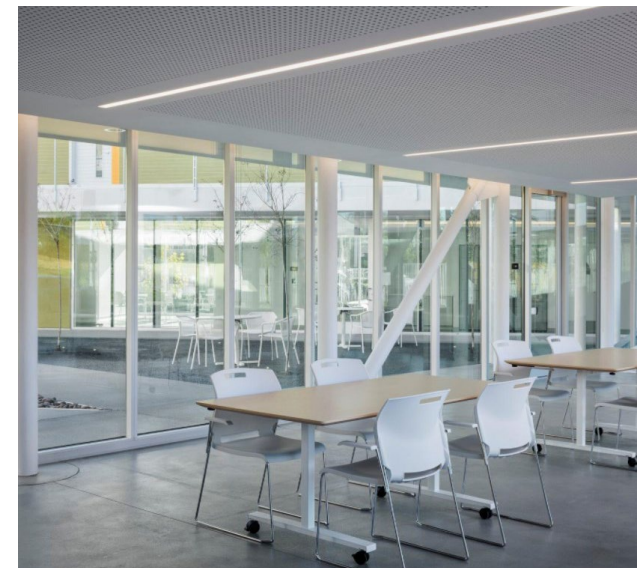
COMMUNITY

Matthew's design approach develops opportunities on each project for different layers of community to shape the residents connections. It's scales of community in how the design embraces and promotes the public realm on the street, to shared community spaces for the neighborhood and residents, to resident courtyards, shared balconies and small niches to optimize every available space to promote social connections.

The elevated baseline includes:

- Utilize premium locations on site to promote community / shared spaces.
- Shared spaces to have visual connection to neighborhood and landscape/nature
- Quality of shared space – access to daylight, prevailing breezes, views and organized around vertical circulation.

This approach extends to a diverse portfolio of mixed use housing typologies. Matthew's experience is across a spectrum of housing which includes the following: navigation centers, bridge housing, permanent supportive housing, affordable housing, market rate and mixed use with wrap around behavioral health services.



Declaration of Responsibility:

I have personal knowledge of the nominee's responsibility for this project, in which he was largely responsible for design.

Keith Hempel, FAIA | LPA, President