



Deltek.

# AIA/Deltek Architecture Billings Index<sup>®</sup> (ABI)

MAY 2026



\*All graphs represent data from May 2025–May 2026.



**NATIONAL**



**REGIONAL**



**SECTOR**

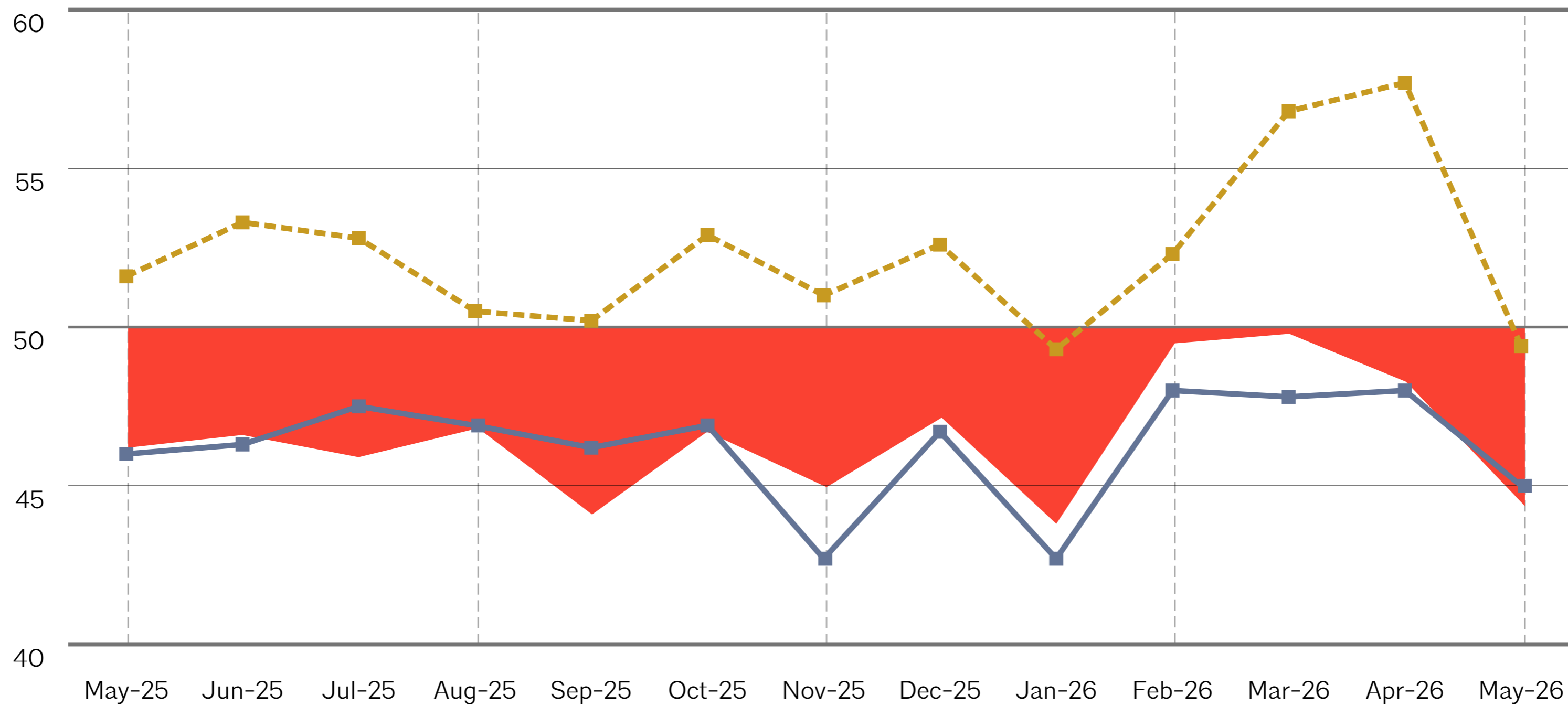
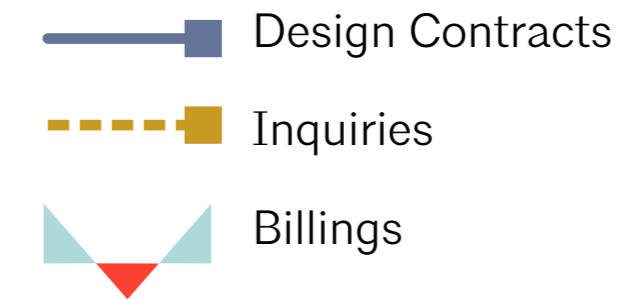


**PRACTICE**



# NATIONAL

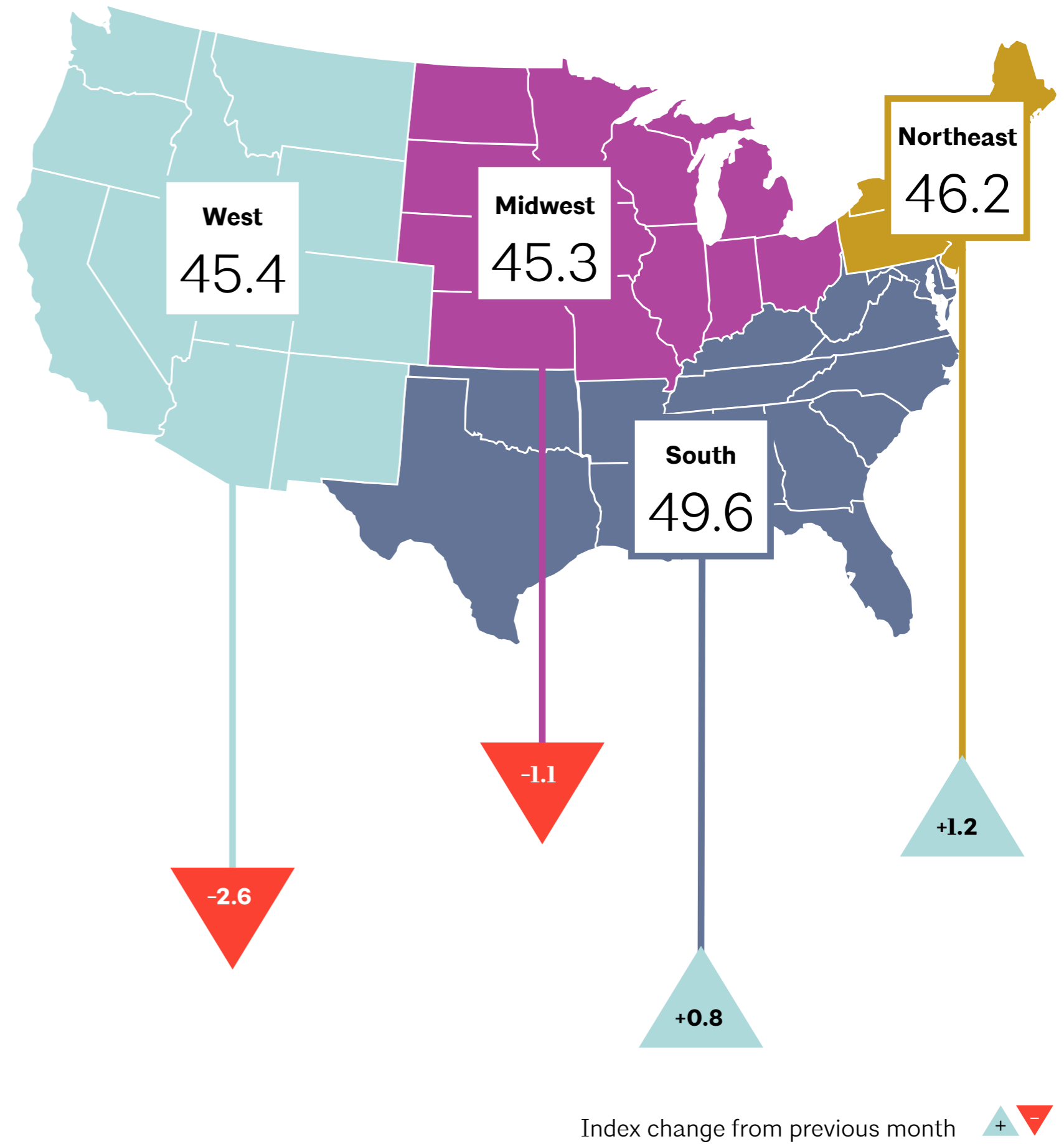
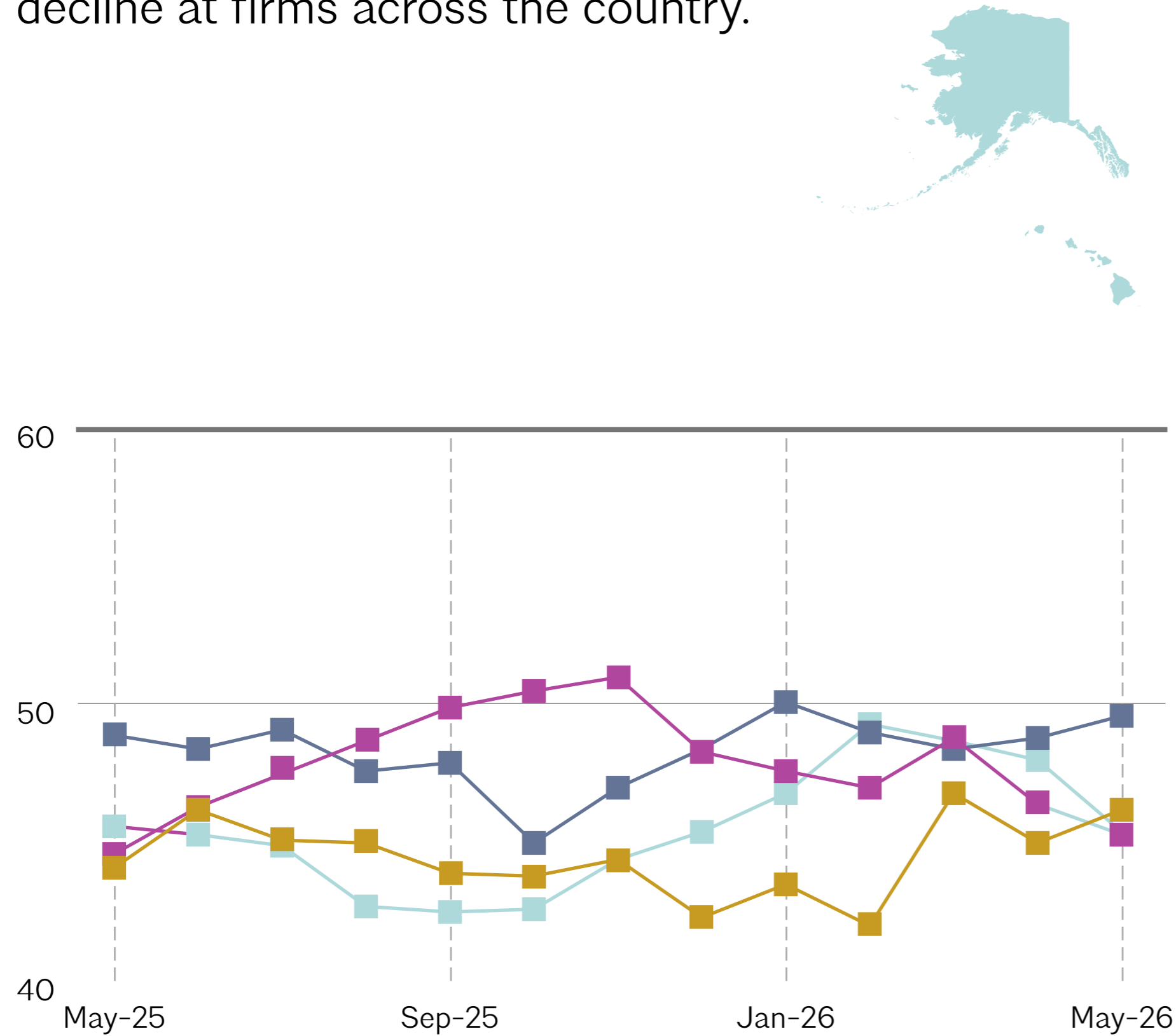
Architecture firm billings weaken.





# REGIONAL

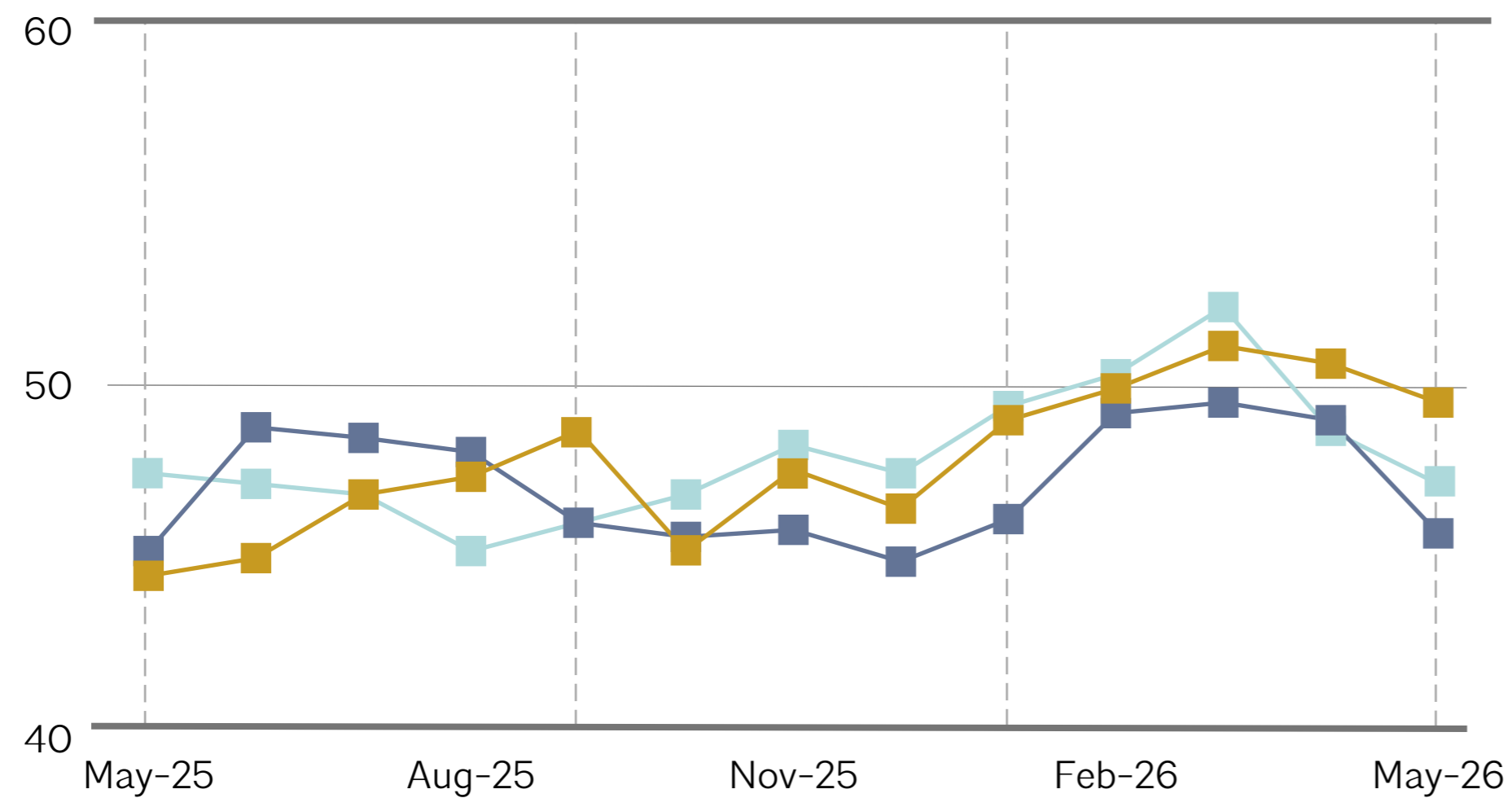
Business conditions continue to decline at firms across the country.





# SECTOR

Billings soften at all firm specializations.



**Commercial/industrial 45.5**



**Multi-family residential 49.2**



**Institutional 46.9**



## PRACTICE

Increasing salaries, offering additional perks and benefits are most common actions firms take to retain and recruit architectural staff.

% of firms, actions taken by firm given today's architectural staffing conditions

